



# Waterworks Catalog

(810) 503-9000 [www.fernco.com](http://www.fernco.com)

## Commitment

Fernco is committed to giving the highest level of quality, Fernco quality, at the most competitive price. Our goal is to maintain standards of excellence in quality and service, while continuing to be the most innovative company in the industry.

## Convenient Ordering, Fast Delivery

Fernco's phone ordering system ensures easy ordering and prompt delivery for our customers. When you call Fernco, you will be assisted by a trained professional who knows the industry and understands your individual needs. Your order will be quickly entered into our data processing system for accurate recording of specifications and costs.

Only Fernco offers you the industry's largest product line, highest fill rate and the most complete merchandising program. All of which is supported by over fifty years of design, manufacturing and distribution experience combined with an ongoing commitment to product innovation.

### United States

(810) 503-9000

fernco.com

### Canada

(519) 332-6711

fernco.ca

## FLEXIBLE COUPLINGS

Standard Series	1
1000 StrongBack RC	3
5000 StrongBack RC	4
Large Corrugated Series	5
Large Diameter Series	5
Corrugated Series	6
Western Series Center Stop	6
Eccentric Series	6
Ultra Rib Series	7
Stainless Steel Clamps	7
Torque Wrenches	7
Large Diameter Caps	7
Qwik Caps	8

## LATERAL CONNECTIONS

QwikSeal	9-10
Tap Saddles & Pressure Kit	11

## SEALANTS

Pow-R Patch	12
Pow-R Wrap	12
Pow-R Industrial	12

# INDEX

## INTERNAL SEALS

Multi-Tite Gaskets	13
Concrete Manhole Adapter	13
Donuts	14
O-Rings	14

## WATER MANAGEMENT

StormDrain Plus	15
Downspout Connector	16
Universal Downspout Connector	16

## RESOURCES

Coupling Sizing Charts	
- Clay to Clay	17
- Clay to Cast Iron (CI), Plastic, Copper, Steel or Lead	18
- Clay to Asbestos Cement Fibre (AC) or Ductile Iron (DI)	19
- Concrete to Concrete	20
- Concrete to Clay	21
- Concrete to CI, Plastic, Copper, Steel or Lead	21
- AC or DI to CI, Plastic, Copper, Steel or Lead	22
- AC or DI to AC or DI	23
- CI Plastic, Copper, Steel or Lead to CI, Plastic, Steel or Lead	24
- Concrete to DI	25
Waterworks Market Reps	27
Plumbing Market Reps	29
Acid Resistance Chart	31



# A global company with a focus on the individual customer.

## Established in 1964

In the 1950's, William Zopfi was looking for a reliable solution to fit his pipe connection needs for sewer lines in the Detroit, MI area. He developed a tar donut that would allow him to create more connections per day, increasing his efficiency in the field. In 1964, the Fernco Joint Sealer Company was formally established when the 'donut' became patented. When word spread of this invention, Zopfi, set up a small shop behind his plumbing business to begin producing the Donut. Thus, Fernco was set on it's course for the future.

When Darrell Cooper joined the team, he had a philosophy of working closely with wholesale distributors to provide products in a timely manner. This would prove to be a core value that was as important then as it is today.

In 1973 Dallas, Texas requested a bid for the first Fernco Coupling to fit a pipe without a bell housing. Cooper saw this product as an opportunity for vast growth and established couplings in the market. Fernco then moved to its current headquarters in Davison, Michigan, allowing the company to expand and expedite their manufacturing and shipping process. In 1978, Cooper was named President of the company and purchased Fernco Joint Sealer Company, forming a new company, Fernco, Inc.

## Industry Leaders

Fernco has continued to grow into different markets, while developing innovative and reliable products. Fernco has expanded throughout North and South America and acquired Flexseal Couplings LTD, the leading manufacturer of flexible couplings in the European market. The Flexseal acquisition positioned Fernco as the leading manufacturer and distributor of flexible couplings in the world.

In 2015, Fernco proudly invested in a new 150,000 sq. ft. manufacturing and distribution center in Davison, MI, along with state-of-the-art electric injection machines. Located a mile from previous facility, the center will allow Fernco to focus on additional product development and continue delivering exceptional customer service for the next fifty years.

Fernco's continuous growth is not to become the biggest company, but the best company. With resources from around the world, Fernco is able to create products that will meet the needs of the individual and the industry. It all comes down to Fernco's focus on the individual customer to provide a product that can be trusted with confidence.

## Global Manufacturing



United States



Canada



United Kingdom



Germany



Australia

## Global Distribution



United States



Canada



European Union



Australia



New Zealand



Puerto Rico



Mexico



Brazil



150,000 sq. ft. manufacturing and distribution facility







## For a coupling to perform like a Fernco,

---

# IT MUST SAY FERNCO.

Manufactured of tough elastomeric polyvinyl chloride (PVC), Fernco couplings are strong, resilient and not affected by soil conditions. Due to the nature and physical properties of their material, they are also resistant to chemicals, ultra-violet rays, fungus growth and normal sewer gases. And they are leak-proof, rot-proof and seal against infiltration and exfiltration.

Because of their quality and ease of installation, Fernco flexible couplings have found approval among plumbers, contractors and municipalities across the globe. Fernco couplings are used for all types of in-house and sewer applications such as drain, waste, vent piping, house-to-main, cut-ins, conductors, roof-drains and more.

All couplings are clearly marked with part number, size, and the materials that the coupling will connect to. Fernco has fast lead times with no minimum order required. For special applications, our custom design service can supply couplings for individual customer requirements. Our Flexible Couplings are the industry standard.

## Standard Flexible Couplings



Fernco's specially formulated PVC compound positively seals most sewer and drain connections.

Fernco makes the most complete line of couplings in the industry, from sizes 3/4" and larger. Custom large diameter couplings are available, along with shielded transitional couplings to ensure all pipes, underground and above-ground, can be connected with a Fernco coupling. Because Fernco couplings have earned a reputation for superior performance, you can have full confidence in their quality and reliability.

Tested designs backed by over five decades of proven experience

Available from 3/4" and larger

- Seals against infiltration and exfiltration
- Leak-proof, root-proof and resistant to many chemicals, ultra violet rays, fungus growth and normal sewer gas
- Conforms to ASTM D 5926, C 1173 and CSA B602
- Connects pipes of same or different materials and sizes
- Corrosion-resistant and rust-proof stainless steel clamps
- Made of elastomeric polyvinyl chloride (PVC)
- 4.3 PSI maximum test pressure
- 140°F maximum intermittent operating temperature
- 120°F maximum consistent operating temperature



### High Torque Clamps

STANDARD on all 18" and larger couplings



Flexible Couplings

see sizes on pg. 17-24

# STRONG BACK

## 1000 RC Series



Flexible Couplings

### Technical Data

#### Gasket

- Meets the material requirements of:
  - CSA B602
  - ASTM D 5926
  - ASTM C 1173
- Hardness, Shore "A", Inst. -+5.....65
- Tensile Strength, Min. psi....1000
- Tear Strength, Min.....150 lbf/in
- Brittleness Temperature.....-40°F

#### 1000 RC Series Clamps

- Clamp housing - 301 stainless steel
- Clamp Band - 301 stainless steel
- Clamp screw - 305 stainless steel
- Installation torque 60 lb/in
- High torque clamps installation torque 120 lb/in where applicable

#### NEW 6000 RC Series

- American Iron and Steel (AIS) Compliant

#### Shear Ring

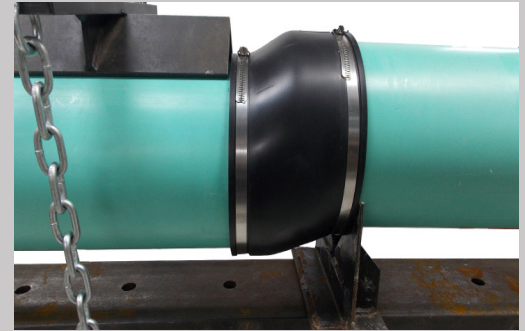
- .012" Thick, 300 Series Stainless Steel
- Width manufactured according to coupling width (1.5", 2.13" or 4")
- Length manufactured according to coupling diameter
- Clamps spot welded in place

#### Coupling

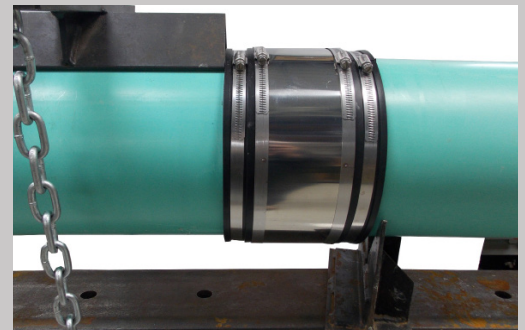
- Manufactured to conform to the performance requirements of:



- 140°F maximum intermittent operating temperature
- 120°F maximum consistent operating temperature



Shear Resistance Test using an unshielded sewer coupling per ASTM C 1173 applied load 50 lbs per nominal inch of pipe diameter



Shear Resistance Test using a Fernco 1000 RC coupling per ASTM C 1173 applied load 50 lbs. per nominal inch of pipe diameter

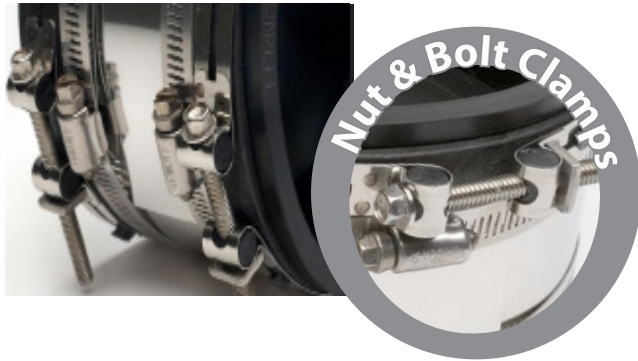


see sizes on pg. 17-24



# RC COUPLINGS

## 5000 RC Series



Flexible Couplings

### Technical Data

#### Gasket

- Meets the material requirements of:
  - CSA B602
  - ASTM D 5926
  - ASTM C 1173
- Hardness, Shore "A", Inst. +5.....65
- Tensile Strength, Min. psi.....1000
- Tear Strength, Min.....150 lbf/in
- Brittleness Temperature.....-40°F

#### 5000 RC Series Clamps

- Clamp Band - 316 stainless steel
- 6" and larger couplings incorporate two nut and bolt take-up points per band
- Installation torque 60 lb/in

#### Shear Ring

- .012" Thick, 300 Series Stainless Steel
- Width manufactured according to coupling width (1.5", 2.13" or 4")
- Length manufactured according to coupling diameter
- Clamps spot welded in place

#### Coupling

- Manufactured to conform to the performance requirements of:



- 140°F maximum intermittent operating temperature
- 120°F maximum consistent operating temperature

**CUSTOM CONNECTIONS**

Any size, any material.

Designed to resist heavy earth loads and shear forces underground while providing improved pipe alignment

see sizes on pg. 17-24

# HTRC Corrugated Pipe Couplings

Large diameter corrugated pipe couplings 10" to 60"

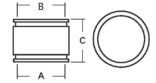


## Technical Data

- **Shear Resistance:** .012" 300 series stainless steel shear ring
- **High Torque Clamps:** 301 series stainless steel high torque clamps
  - 10" couplings are 6" wide with two clamp areas
  - 12" and larger couplings are 10" wide with 4 clamp areas.
- **Sealing Gasket:** The flexible PVC gasket has a smooth inside surface to provide ultimate sealing performance, making 360° contact over its entire length.

## Greater sealing force on corrugated pipe

Additional sizes available upon request.



### Corrugated Polyethylene to Plastic

Part Number	A		B		C	
	in.	mm	in.	mm	in.	mm
*1070-10-8HTRC	11.6	295	8.4	213	6.0	152
*1070-1010HTRC	11.6	295	10.5	267	6.0	152
*1070-1210HTRC	14.4	366	10.5	267	10.0	254
*1070-1212HTRC	14.4	366	12.5	318	10.0	254
*1070-1515HTRC	17.7	450	15.3	389	10.0	254
*1070-1818HTRC	21.3	541	18.7	475	10.0	254
*1070-2424HTRC	28.1	714	24.8	630	10.0	254
*1070-3030HTRC	35.4	899	31.5	800	10.0	254
*1070-3636HTRC	41.6	1057	39.4	1001	10.0	254
*1070-4242HTRC	47.7	1212	44.5	1130	10.0	254
*1070-4848HTRC	54.1	1374	50.8	1290	10.0	254

### Corrugated Polyethylene to Corrugated Polyethylene

Part Number	A		B		C	
	in.	mm	in.	mm	in.	mm
1071-1010HTRC	11.6	295	11.6	295	6.0	152
1071-1212HTRC	14.4	366	14.4	366	10.0	254
1071-1515HTRC	17.7	450	17.7	450	10.0	254
1071-1818HTRC	21.3	541	21.3	541	10.0	254
1071-2424HTRC	28.1	714	28.1	714	10.0	254
1071-3030HTRC	35.4	899	35.4	899	10.0	254
1071-3636HTRC	41.6	1057	41.6	1057	10.0	254
1071-4242HTRC	47.7	1212	47.7	1212	10.0	254
1071-4848HTRC	54.1	1374	54.1	1374	10.0	254
1071-5454HTRC	61.0	1549	61.0	1549	10.0	254
1071-6060HTRC	66.8	1697	66.8	1697	10.0	254

Flexible Couplings

## Large Diameter Couplings

For non-standard or special size applications

### Technical Data

- 10" wide
- 4 series 300 stainless steel high torque clamps with multiple take up points
- Up to 120 lb/in of torque for greater sealing pressure

\*Where O.D. differences range from 1-1/4" - 12", a Fernco bushing system is available



The ideal coupling for repairs, alterations or rehabilitation of large diameter sewer pipe.

**CUSTOM CONNECTIONS**

Any size, any material.

## Expanded Range LDC Couplings

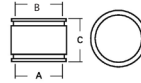
- Connect pipe materials with different O.D.'s up to 12" variance
- Interlocking bushing system
- Reduces customer cost by utilizing one coupling and bushing configuration
- Reduces multiple couplings and intermediate pipe





## Corrugated Pipe Couplings

Connect ADS and Hancor corrugated polyethylene to plastic



### Technical Data

- Available in 3", 4", 6" and 8" sizes
- Conforms to ASTM D5926
- Connects corrugated polyethylene drainage and irrigation systems to sewer, drain or DWV plastic pipe



Part Number	A		B		C	
	in.	mm	in.	mm	in.	mm
*1070-32	3.57	91	2.38	60	3.96	101
1070-33	3.57	91	3.44	87	3.96	101
*1070-42	4.76	121	2.38	60	3.94	100
*1070-43	4.76	121	3.38	86	3.94	100
1070-44	4.76	121	4.29	109	3.94	100
*1070-63	6.83	173	3.38	86	5.91	150
*1070-64	6.83	173	4.38	111	5.91	150
*1070-65	6.83	173	5.50	140	5.91	150
1070-66	6.83	174	6.50	165	5.91	150
*1070-84	9.76	248	4.38	111	5.70	145
*1070-86	9.76	248	6.38	162	5.70	145
1070-88	9.76	248	8.42	214	5.70	145

## Western Series Center Stop Couplings & Bushings

### Technical Data

- Center stop coupling with bushing inserts
- Bushings available for 4", 6" and 8" transitions of clay, cast iron, plastic and AC:
  - Sch 40 PVC, ABS plastic and SDR-35 Plastic
  - Bead, bald and plain-end cast iron
  - Rough barrel and machined-end AC
  - Ductile iron
- 300 series stainless steel band clamps, 316 series available



### Bushings

Part Number	Size	Description
481-2.38	5.38" x 2.38"	Clay to PECl
481-3.38	5.38" x 3.38"	Clay to PECl
481-3.50	5.38" x 3.50"	Clay to Bead CI, PL or XHCl
481-4.25	5.38" x 4.25"	Clay to SDR-35 or PVC
481-4.38	5.38" x 4.39"	Clay to PECl or Bald CI (J)
481-4.50	5.38" x 4.50"	Clay to ABS or Sch. 40
481-4.63	5.38" x 4.63"	Clay to Bead CI or MEAC (C)
481-4.90	5.38" x 4.90"	Clay to RBAC or CI 150 DI (B)
681-6.38	7.98" x 6.37"	Clay to PECl or PVC (J)
681-6.63	7.98" x 6.62"	Clay to ABS, Bead CI or MEAC (C)
881-8.38	10.18" x 8.42"	Clay to PECl or PVC (J)
881-8.63	10.18" x 9.00"	Clay to ABS, Bead CI or MEAC
881-9.00	10.18" x 9.00"	Clay to RBAC or CI 150 DI (B)
885-8.38	9.00" x 8.42"	AC to PECl or PVC
885-8.63	9.00" x 8.64"	Clay to ABS, Bead CI or MEAC

### Couplings

Part Number	Size	Description
1081-44	5.44" x 5.44"	Clay to Clay
1081-66	8.00" x 8.00"	Clay to Clay
1081-88	10.00" x 10.00"	Clay to Clay
1085-88	9.00" x 9.00"	AC to AC
1086-33	3.40" x 3.40"	CI or PL to CI or PL
1086-44	4.56" x 4.56"	CI or PL to CI or PL



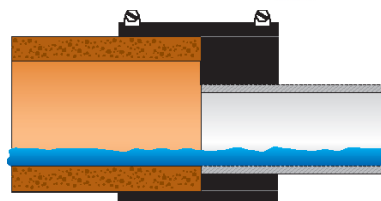
Flexible Couplings

## Eccentric Bushings & Couplings

Maintain a continuous flow-line in critical grade conditions

### Technical Data

- Available for all common sewer pipe
- Aligns the inside wall of the two pipes
- Provides an obstruction free flow
- Meets ASTM C 1173 and D 5926
- 300 series stainless steel clamps
- Maximum test pressure 4.3 PSI

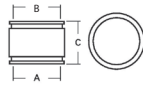


- **1002 EB**  
Clay to Cast Iron or Plastic
- **1006 EB**  
Concrete to Cast Iron or Plastic
- **1051 EB**  
AC or Ductile Iron to Cast Iron or Plastic
- **1055 EB**  
AC or Ductile Iron to AC or Ductile Iron
- **1056 EB**  
Cast Iron, Plastic, Copper, Steel or Lead to Cast Iron, Plastic, Copper, Steel or Lead

see sizes on pg. 17-24

## Ultra Rib Couplings

Effectively connect sewer pipe



ETI to SDR-35 Plastic

A B C

Part Number	in.	mm	in.	mm	in.	mm
1072-1212	14.00	355	14.00	355	9.89	251
1072-1515	16.80	427	16.80	427	9.89	251
1072-1818	20.30	515	20.30	515	10.00	2540
1072-2121	23.75	603	23.75	603	10.00	2540
1072-2424	26.75	680	26.75	680	10.00	2540



ETI to Asbestos Cement or Ductile Iron

A B C

Part Number	in.	mm	in.	mm	in.	mm
*1073-1212	14.00	355	12.25	311	9.89	251
*1073-1515	16.80	427	15.30	388	9.89	251
*1073-1818	20.30	515	18.75	476	10.32	262
*1073-2121	23.75	603	21.60	548	12.53	318
*1073-2424	26.00	660	24.80	630	10.00	2540

new

## Stainless Steel Clamps

9/16" to 16"



Series 316 stainless and high torque clamps are available upon request

Interlocked housing and band design strengthens under tension to ensure a positive seal. Bands have additional slots to accommodate greater dimensional range.

Flexible Couplings

## Torque Wrenches

Metal construction for 5/16" hex head screws, preset to 60 in. lbs. torque



**TW-100**  
Built-in reversing lever

Recommended for Fernco couplings and other banded Fernco products.



**TW-200**  
Finger grip reversing collar

## Custom Large Diameter Debris Caps

Custom fabricated from 14" and larger pipe O.D.

### Technical Data

- Reusable or permanent debris caps for pipe ends
- Designed for direct burial on non-pressurized horizontal pipe lines
- Strong two-piece construction
  - CAP Face: Rigid durable FPVC
  - Cap Body: Flexible PVC
  - Clamps: All 300 series stainless steel with 60 lb/in installation torque
- Soil tight seal

**NOTE:** Not intended for use as a load bearing surface on vertically orientated pipe. Do not stand or step on cap surface if installed on vertically orientated pipe.

**CUSTOM**

Any size, any material.



# Qwik Caps

Quick, reusable caps for pipe ends, testing & cleanouts



## Technical Data

- Underground or above-ground applications
- Complies to ASTM D 5926
- 300 stainless steel clamps
- Maximum operating temperature: 140°F intermittent
- Maximum test pressure: 4.3 PSI
- Permanent seal
- Fast, easy solution



## Nominal Qwik Caps

Part Number	I.D.	Min.	Max.	Material
QC-101	1.86	1.61	1.95	1 1/2" PL, CI, Copper or ST
QC-102	2.34	1.94	2.48	2" PL, CI, Copper or ST or 1 1/2" Durion
QC-103	3.48	3.09	3.63	3" PL, CI, Copper or ST
QC-104	4.47	3.96	4.60	4" PL, CI, Copper, ST or Triple Wall
QC-105	5.57	5.03	5.85	5" PL, CI, Copper or ST or 4" Clay or Concrete
QC-106	6.30	5.73	6.62	6" PL, CI, Copper, ST or SS or 5" EC, OB, AC or Concrete
QC-108	8.63	7.70	9.11	8" PL, CI, Copper, ST or SS or 6" WC
QC-10 (TC-10)	10.47	9.88	11.00	10" PL, CI, Copper, ST or SS or 8" Concrete
QC-112	12.49	11.41	13.33	12" PL, CI, ST, Ductile or AC or 10" WC, EC or Concrete

Part Number	I.D.	Min.	Max.	Material
QC-0.85	0.85	0.79	0.91	1/2" PL or ST or 3/4" Copper or SS
QC-1.07	1.07	1.00	1.12	3/4" PL or ST or 1" Copper or SS
QC-1.38	1.37	1.22	1.50	1" PL or ST or 1 1/4" Copper or SS
QC-1.68	1.68	1.37	1.87	1 1/4" PL or ST or 1 1/2" Copper or SS
QC-2.75	2.75	2.18	2.93	2" Durion
QC-3.75	3.76	3.29	4.00	3" Durion or 4" SS
QC-4.75	4.82	4.32	5.05	4" Durion, Ductile, OB or Corrugated or 5" SS
QC-7.00	6.96	6.44	7.25	5" WC or 6" Ductile, AC, OB or Corrugated
QC-9.00	9.01	8.59	9.34	8" Ductile, OB, AC or Corrugated
QC-9.75	9.75	9.29	10.00	8" WC or EC
QC-10.75	10.74	10.22	11.15	10" Ductile, AC or Corrugated
QC-14.00	14.00	13.23	14.30	12" Concrete or Clay or 14" PL

Flexible Couplings

Qwik Caps offer a quick, easy way to cap pipe ends, cleanouts and test pipes. Made of flexible PVC, they are suitable for above-ground or underground applications on cast iron, steel, copper or plastic piping.

WC: West Coast Clay  
 EC: Eastern Standard Clay  
 OB: Orangeburg  
 PL: Plastic

CI: Cast Iron  
 AC: Asbestos Cement  
 ST: Steel  
 SS: Stainless Steel





## Fernco QwikSeal

Part Number	Pipe Inlet	Host Pipe Size Application
QS-4	4" SDR	8" diameter and larger pipe
QS-4S40	4" SCH-40	8" diameter and larger pipe
QS-6	6" SDR-35	10" diameter and larger pipe
QS-6S40	6" SCH-40	10" diameter and larger pipe
QS-8	8" SDR-35	15" diameter and larger pipe

### NOTE Corrugated Applications

- QS-4 and QS-4S40: 8" to 24" pipe diameter
- QS-6 and QS-6S40: 10" to 24" pipe diameter
- QS-8: 15" to 24" pipe diameter



## Fernco Hole Saws

Part Number	Description
QS-5x4HS	5" OD x 4" Deep Hole Saw with Arbor
QS-7x4HS	7" OD x 4" Deep Hole Saw with Arbor
QS-9x4HS	9" OD x 4" Deep Hole Saw with Arbor
QS-SAW5S	5" OD x 4" Deep Hole Saw
QS-SAW7S	7" OD x 4" Deep Hole Saw
QS-SAW9S	9" OD x 4" Deep Hole Saw
QS-ARBOR-S	3/8" x 6" Drill with 1/2" Arbor
QS-ADAPTER	1 1/4" x 3/4" Coring Machine Adapter



## Fernco Coring Bits

Part Number	Description
QS-5x14CB	5" OD x 14" Length Abrasive Coring Bit
QS-7x14CB	7" OD x 14" Length Abrasive Coring Bit
QS-9x14CB	9" OD x 14" Length Abrasive Coring Bit

## Technical Data

- Meets ASTM C 923
- When tested in concrete manholes
  - Creates water-tight, compression seal up to 10 PSI
  - Withstands up to 7° of deflection
- Easy color identification - gray Sch 40 - green SDR-26 & 35
- Independent of host pipe size, type or material
- Reduced complexity, many solutions with one QwikSeal
- Less inventory and more turns

Connect service pipe to solid wall, profile, closed profile and corrugated pipe with QwikSeal

# QwikSeal Installation



1. Core a perpendicular hole to the main line:  
 - 5" hole for 4" pipe inlet  
 - 7" hole for 6" pipe inlet  
 - 9" hole for 8" pipe inlet



2. Use sand paper or a file, clean and remove any burrs from opening.



3. Remove band clamp from QwikSeal, fold and insert into opening. Unfold.



4. Pull up on QwikSeal until it stops against the inside of the pipe.



5. Measure the depth of the QwikSeal, from the pipe stop to the top edge.



6. Measure the depth of the fitting to be attached pipe stub. See alternative method below.



7. Add the dimensions of the QwikSeal and the fitting and cut a stub to that length.



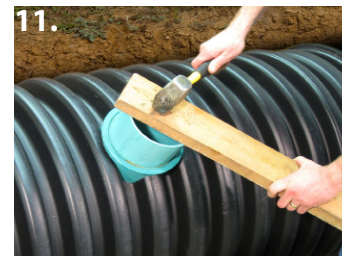
8. Bevel the leading edge of the pipe stub for easier insertion into the QwikSeal.



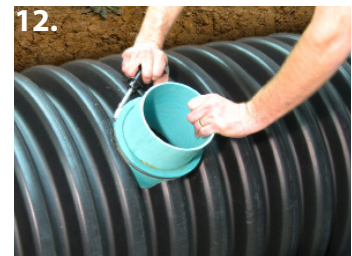
9. Lubricate the QwikSeal and pipe stub.



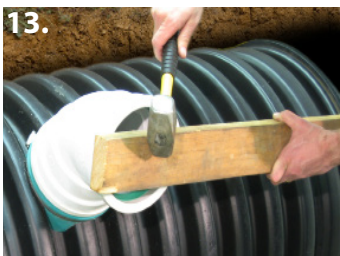
10. Start the pipe stub into the QwikSeal by hand.



11. Using a hammer and block of wood, drive the pipe stub to the QwikSeal pipe stop.



12. Install the band clamp at 60 in-lbs. torque.



13. Install pipe fitting. Fitting should sit flush with the surface of the QwikSeal.



Fitting and QwikSeal should be flush

## Alternative Methods to Stub and Fitting

**Bell End Pipe:** You may also use the bell end of a piece of SDR-35 or SCH-40 instead of the stub and fitting method. After measuring the depth of the QwikSeal in step 5, transfer this measurement to the bell end of your inlet pipe, measuring from the bell. (Figure A) Proceed with steps 8 - 12.

**Street Fittings:** Street fittings may also be used with QwikSeal. (Figure B)



A.



B.



# Tap Saddles & Pressure Kit

## Tap Saddle Technical Data

- Conforms to ASTM D 5926
- Manufactured from a specially formulated high durometer PVC
- Includes special 300 series stainless steel 'slip-lock' clamps for a fast and simple installation on any type of pipe from 6"-15"\*
- A larger apron with locating ring fits 5" or 7" standard shell cutters
- Large band grooves
- Ensures a **soil-tight seal**
- Available for most 4" or 6" plastic or cast iron drain pipe inlets in Tee or Wye configurations
- 4" saddle fits 6" and larger host pipe
- 6" saddle fits 8" and larger host pipe



Part Number	Description
TST-4	4" CI or PL Inlet - Tee Tap Saddle
TST-6	6" CI or PL Inlet - Tee Tap Saddle
TSW-4	4" CI or PL Inlet - Wye Tap Saddle
TSW-6	6" CI or PL Inlet - Wye Tap Saddle
*312-300	Extension Clamps larger than 15" sewer mains

Lateral Connections

## TSPK Technical Data

- Bentonite tape provides a **water tight seal**
- Pressure tested to 10 PSI
- Coated steel reinforcing bars apply an even sealing pressure
- Includes two special 300 series stainless steel 'slip-lock' clamps for a fast and simple installation



Part Number	Description
TSPK-46	Pressure kit for Fernco Flexible Tap Saddles - Fits models: TST-4, TST-6, TSW-4, TSW-6

Flexible Tap Saddles provide a soil-tight seal. Use Fernco Tap Saddle Pressure Kit (TSPK-46) for a water-tight connection up to 10 PSI.







Pow-R Patch is a complete repair kit that includes a pre-coated fiberglass cloth in a self-contained mixing pouch and a pair of protective gloves. Pow-R Patch is simple, fast and delivers long-term solutions.

**Technical Data**

- Holds up to 100 PSI
- Heat resistant to 425°F

Part Number	Description
FP-P46	4" x 6" fiberglass and epoxy patch

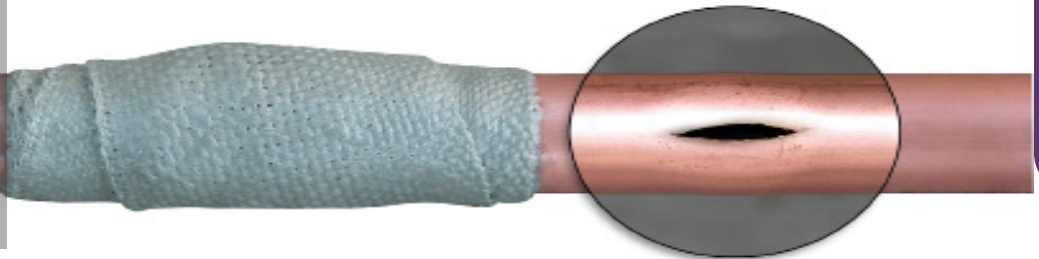


Pow-R Wrap is a water activated fiberglass wrap that permanently repairs wet or dry pipe and hose. Pow-R Wrap is a self-contained kit including everything you need to repair a magnitude of applications.

**Technical Data**

- Water activated
- Fiberglass wrap
- Heat resistant to 425°F
- Conforms to standard water main pressure test
- Cures in 30-60 mins.

Part Number	Description	Pipe Diameter
FPW248CS	2" x 48" wrap	Up to 1"
FPW3132CS	3" x 132" wrap	1-1/4" to 3"
FPW4252CS	4" x 252"	3" to 6"



Sealants



Pow-R Wrap Industrial with Pow-R Belt is a permanent solution to structurally strengthen large diameter pipes from 8"-50". Eliminate pipe replacement with hands-free cure time and a smooth, professional finish.

**Technical Data**

- Heat resistant to 425°F
- Conforms to standard water main pressure test
- Cures in 60-90 mins. at 55°-75°F
- Safe for drinking water systems
- Repairs up to 1/4" W x 4" L
- Impervious to water, oil, and most chemicals, solvents and acids when cured



FPW8540S-1	1 KIT 8" X 540" Pow-R Wrap				
Pipe Outside Diameter	8"-18"	20"-24"	26"-34"	36"-42"	44"-50"
Number of Kits REQUIRED	1 KITS	2 KITS	3 KITS	4 KITS	5 KITS

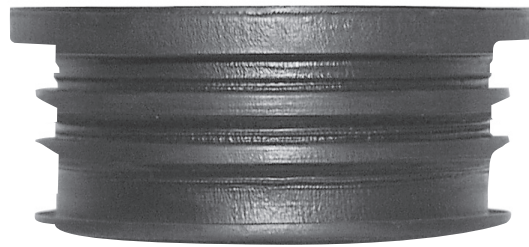
## Multi-Tite Pipe Gaskets

Pipe gasket for service weight cast iron pipe

### Technical Data

- Meets ASTM C564
- Multi rings on the outside create an easy installation
- Seals sewer pipe joints and connections such as sockets, hubs, bells and spigots

Part Number	Description
SVG-2	2" service weight cast iron
SVG-3	3" service weight cast iron
SVG-4	4" service weight cast iron
SVG-5	5" service weight cast iron
SVG-6	6" service weight cast iron
SVG-8	8" service weight cast iron
SVG-10	10" service weight cast iron
SVG-12	12" service weight cast iron
SVG-15	15" service weight cast iron



## Concrete Manhole Adapters

Eliminate leaks around pipes entering manhole walls

CMA and LDCMA are corrosion proof and unaffected by acid or alkali, however may be subjected to various conditions that are beyond the manufacturer's control. Discretion must be used in its application and installation. CMA's are designed for cast iron and plastic connections and the LDCMA's are custom fabricated to size.

Part Number	Description
4 CMA	4" I.D. Pipe
6 CMA	6" I.D. Pipe
8 CMA	8" I.D. Pipe
10 CMA	10" I.D. Pipe
12 CMA	12" I.D. Pipe



For custom sizes, order by specifying the pipe O.D. which is to receive the adapter. Minimum size: 8.5 inches O.D.

Due to the factors that can influence the effectiveness as a seal, Fernco does not warrant this product as a positive seal.

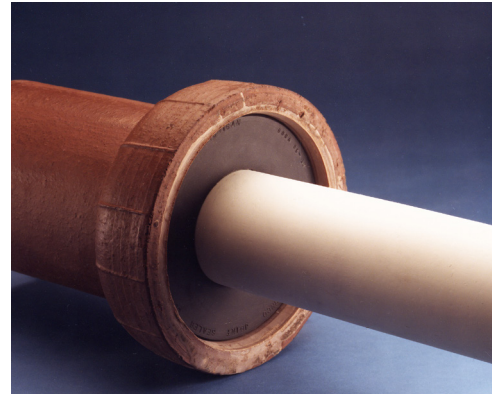
## Fernco Donuts

### Sewer pipe compression joint seal

Fernco Donuts are flexible PVC donut-shaped rings for the compression sealing of sewer pipe joints and DWV connections such as sockets, hubs, bells and spigots.



Fernco Donuts are available in hundreds of sizes and configurations to use with most brands and types of piping material.



**Give us a call.**  
Our sales coordinators are trained to assist you in making the right part selection.

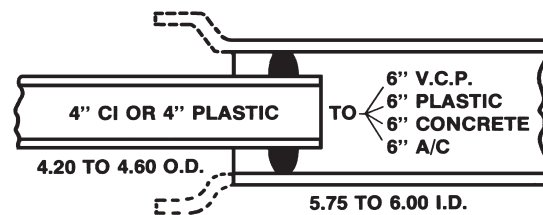
## O-Rings

### Connects 4" house pipe to 6" sewer pipe

O-rings provide a quick, simple solution to create secure connections between most 4" house pipe and 6" sewer pipe.

#### Technical Data

- Meets ASTM C 443 and C 425
- Connects CI or plastic house pipe to clay, plastic, concrete or A/C sewer pipe



Part Number	Description
BR-64	Rolling style rubber O-Ring

Installs quickly and easily.  
For 4.20" - 4.60" O.D. house pipe  
Fits 5.75" - 6.00" I.D. sewer pipe





# Ultimate Drainage Solution

StormDrain Plus ensures a long-lasting, permanent solution to the collection and dispersal of standing surface water.

## Technical Data

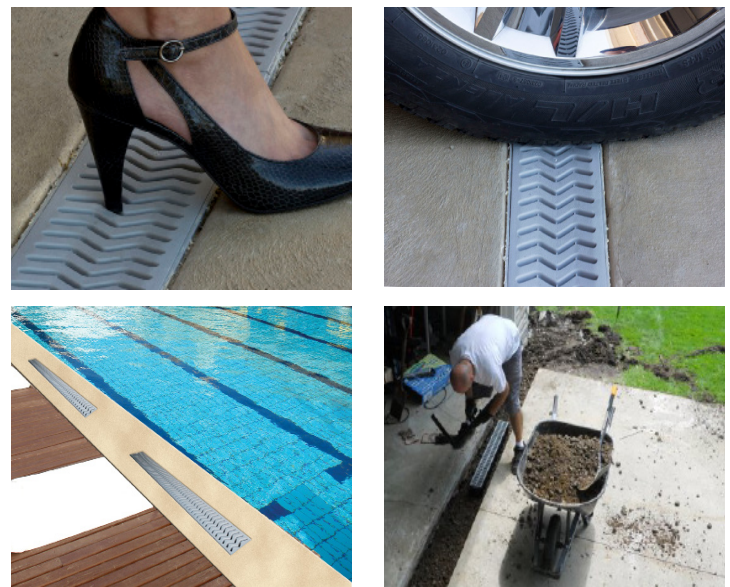
- Designed to withstand automotive weight for Class B (loads of 61-175 psi), medium-duty pneumatic tire traffic, autos and light trucks at speeds less than 20 mph.
- All products are "UV" inhibited
- Grates are ADA and heel guard compliant
- Grates have a non-slip textured surface
- Clips or screws are not required to assemble
- Concave grates trap and transfer water



Water Management

Part Number	Description
FSDP-CHGG	39.5" grey Channel with grate
FSDP-GP3G	Three pieces of grey Channel with grate, one End Cap and one End Outlet
FSDP-QUAD	Four-way connector
FSDP-EC	End Cap
FSDP-EO	End Outlet

Replacement Part Number	Description
FSDP-CH	Grey Channel ONLY
FSDP-GG	Grey grate ONLY



# STRONG & EASY

Ideal for driveways, patios, swimming pools, sports courts, gardens and more!

## Downspout Connectors

Seal out debris by connecting downspouts

Downspout Connectors stretch easily over most common downspouts to seal out debris. Ideal for aluminum, steel or plastic downspouts and cast iron, spiral, corrugated or plastic drain pipe.

Part Number	Drain Pipe	Downspout
DSC-43	4"	3" x 2" rectangular, 3" round
DSC-33	3"	round or 2-1/2" square
DSC-534	4"	5" x 3" rectangular

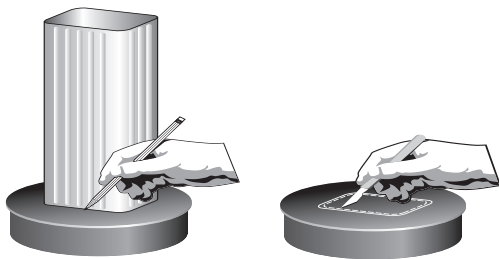


## Universal Downspout Connectors

For the connection of standard and non-standard downspouts

The unique design of Ferco's Universal Downspout Connector allows for the connection of standard and non-standard downspouts to 6" sewer pipe and offset installations.

Part Number	Description
UDSC-6C	6" Cap for DWV pipe exposed above ground, fitting the O.D. of PVC and CI and a 6" or less downspout
UDSC-6P	6" Plug for DWV pipe cut off at grade level, fitting any 6" I.D. sewer pipe and a 5.75" or less downspout



Trace-and-cut installation to fit specific downspouts



UDSC-6C



UDSC-6P

### Technical Data

- Commercial and residential applications
- Will not shrink or crack
- Rot-proof
- Allows offset installation
- Simple trace-and-cut installation

# 1001 Series Couplings

Clay to Clay

\* Insert bushing included **Red** high torque clamps included  new

NOMINAL PIPE DIAMETER	STANDARD	STRONG BACK 1000 RC SERIES	STRONG BACK 5000 RC SERIES	ECCENTRIC
4" x 4" (100 mm x 100 mm)	5.29 x 5.29 <b>1001-44</b>	5.29 x 5.29 <b>1001-44RC</b>	5.29 x 5.29 <b>5001-44RC</b>	
4" x 4" WC (100 mm x 100 mm)	5.51 x 5.51 <b>1001-44WC</b>	5.51 x 5.51 <b>1001-44WCRC</b>	5.51 x 5.51 <b>5001-44WC</b>	
5" x 4" (125 mm x 100 mm)	6.05 x 5.54 <b>1001-54</b>	6.05 x 5.54 <b>1001-54RC</b>	6.05 x 5.54 <b>5001-54RC</b>	
5" x 5" (125 mm x 125 mm)	6.48 x 6.48 <b>1001-55</b>	6.48 x 6.48 <b>1001-55RC</b>	6.48 x 6.48 <b>5001-55RC</b>	
6" x 4" (150 mm x 100 mm)	7.39 x 5.63 <b>1001-64</b>	7.39 x 5.63 <b>1001-64RC</b>	7.39 x 5.63 <b>5001-64RC</b>	7.39 x 5.63 <b>1001-64EB</b>
6" x 4" WC (150 mm x 100 mm)	7.39 x 5.63 <b>1001-64WC</b>	7.39 x 5.63 <b>1001-64WCRC</b>	7.39 x 5.63 <b>5001-64WCRC</b>	7.39 x 5.63 <b>1001-64WCEB</b>
6" x 5" (150 mm x 125 mm)	7.35 x 6.61 <b>1001-65</b>	7.35 x 6.61 <b>1001-65RC</b>	7.35 x 6.61 <b>5001-65RC</b>	7.35 x 6.61 <b>1001-65EB</b>
6" x 6" (150 mm x 150 mm)	7.50 x 7.50 <b>1001-66</b>	7.50 x 7.50 <b>1001-66RC</b>	7.50 x 7.50 <b>5001-66RC</b>	
6" x 6" WC (150 mm x 150 mm)	8.01 x 8.01 <b>1001-66WC</b>	8.01 x 8.01 <b>1001-66WCRC</b>	8.01 x 8.01 <b>5001-66WCRC</b>	
8" x 4" (200 mm x 100 mm)	9.50 x 5.13 <b>1001-84</b>	9.50 x 5.13 <b>1001-84RC</b>	9.50 x 5.13 <b>5001-84RC</b>	9.50 x 5.13 <b>1001-84EB</b>
8" x 6" (200 mm x 150 mm)	9.50 x 7.13 <b>1001-86</b>	9.50 x 7.13 <b>1001-86RC</b>	9.50 x 7.13 <b>5001-86RC</b>	9.50 x 7.13 <b>1001-86EB</b>
8" x 6" WC (200 mm x 150 mm)	9.96 x 7.8 <b>1001-86WC</b>	9.96 x 7.8 <b>1001-86WCRC</b>	9.96 x 7.8 <b>5001-86WCRC</b>	9.96 x 7.8 <b>1001-86WCEB</b>
8" x 8" (200 mm x 200 mm)	9.65 x 9.65 <b>1001-88</b>	9.65 x 9.65 <b>1001-88RC</b>	9.65 x 9.65 <b>5001-88RC</b>	
8" x 8" WC (200 mm x 200 mm)	9.96 x 9.96 <b>1001-88WC</b>	9.96 x 9.96 <b>1001-88WCRC</b>	9.96 x 9.96 <b>5001-88WCRC</b>	
10" x 8" (250 mm x 200 mm)	12.5 x 9.65 <b>1001-10-8</b>	12.5 x 9.65 <b>1001-10-8RC</b>	12.5 x 9.65 <b>5001-10-8RC</b>	12.5 x 9.65 <b>1001-10-8EB</b>
10" x 10" (250 mm x 250 mm)	12.40 x 12.40 <b>1001-1010</b>	12.40 x 12.40 <b>1001-1010RC</b>	12.40 x 12.40 <b>5001-1010RC</b>	
10" x 10" WC (250 mm x 250 mm)	12.40 x 12.40 <b>1001-1010WC</b>	12.40 x 12.40 <b>1001-1010WCRC</b>	12.40 x 12.40 <b>5001-1010WCRC</b>	
12" x 10" (300 mm x 250 mm)	14.50 x 12.50 <b>1001-1210</b>	14.50 x 12.50 <b>1001-1210RC</b>	14.50 x 12.50 <b>5001-1210RC</b>	14.50 x 12.50 <b>1001-1210EB</b>
12" x 12" (300 mm x 300 mm)	14.51 x 14.51 <b>1001-1212</b>	14.51 x 14.51 <b>1001-1212RC</b>	14.51 x 14.51 <b>5001-1212RC</b>	
12" x 12" WC (300 mm x 300 mm)	15.25 x 15.25 <b>1001-1212WC</b>	15.25 x 15.25 <b>1001-1212WCRC</b>	15.25 x 15.25 <b>5001-1212WCRC</b>	
15" x 10" (375 mm x 250 mm)	18.14 x 12.60 <b>1001-1510</b>	18.14 x 12.60 <b>1001-1510RC</b>	18.14 x 12.60 <b>5001-1510RC</b>	18.14 x 12.60 <b>1001-1510EB</b>
15" x 12" (375 mm x 300 mm)	18.14 x 14.38 <b>1001-1512</b>	18.14 x 14.38 <b>1001-1512RC</b>	18.14 x 14.38 <b>5001-1512RC</b>	18.14 x 14.38 <b>1001-1512EB</b>
15" x 15" (375 mm x 375 mm)	18.14 x 18.14 <b>1001-1515</b>	18.14 x 18.4 <b>1001-1515RC</b>	18.14 x 18.4 <b>5001-1515RC</b>	
18" x 18" (450 mm x 450 mm)	21.9 x 21.9 <b>1001-1818</b>	21.9 x 21.9 <b>1001-1818RC</b>	21.9 x 21.9 <b>5001-1818RC</b>	
21" x 21" (525 mm x 525 mm)	25.40 x 25.40 <b>1001-2121</b>	25.40 x 25.40 <b>1001-2121RC</b>	25.40 x 25.40 <b>5001-2121RC</b>	
24" x 24" (600 mm x 600 mm)	28.9 x 28.90 <b>1001-2424</b>	28.90 x 28.90 <b>1001-2424RC</b>	28.90 x 28.90 <b>5001-2424RC</b>	
27" x 27" (700 mm x 700 mm)	32.4 x 32.4 <b>1001-2727</b>	32.4 x 32.4 <b>1001-2727RC</b>	32.4 x 32.4 <b>5001-2727RC</b>	



# 1002 Series Couplings

Clay to CI, Plastic, Copper, Steel or Lead

\* Insert bushing included

Red high torque clamps included

new

NOMINAL PIPE DIAMETER	STANDARD	STRONG BACK 1000 RC SERIES	STRONG BACK 5000 RC SERIES	ECCENTRIC
4" x 4" (100 mm x 100 mm)	5.14 x 4.52 <b>1002-44</b>	5.36 x 4.56 <b>1002-44RC</b>	5.36 x 4.56 <b>5002-44RC</b>	5.29 x 4.38 <b>1002-44EB</b>
4" x 4" WC (100 mm x 100 mm)	5.40 x 4.56 <b>1002-44WC</b>	5.44 x 4.55 <b>1002-44WCRC</b>	5.44 x 4.55 <b>5002-44WCRC</b>	
4" x 4" SDR (100 mm x 100 mm)			5.29 x 4.38 <b>5002-44SDRRC*</b>	
5" x 4" (125 mm x 100 mm)	6.05 x 4.38 <b>1002-54*</b>	6.60 x 4.38 <b>1002-54RC*</b>		6.60 x 4.38 <b>1002-54EB</b>
5" x 5" (125 mm x 125 mm)	6.05 x 5.50 <b>1002-55</b>	6.60 x 5.50 <b>1002-55RC</b>	6.60 x 5.50 <b>5002-55RC</b>	6.60 x 5.50 <b>1002-55EB</b>
6" x 4" (150 mm x 100 mm)	7.34 x 4.50 <b>1002-64</b>	7.50 x 4.50 <b>1002-64RC</b>	7.50 x 4.50 <b>5002-64RC*</b>	7.50 x 4.50 <b>1002-64EC</b>
6" x 4" SDR (150 x 100 mm)		7.50 x 4.38 <b>1002-64SDRRC*</b>	7.50 x 4.38 <b>5002-64SDRRC*</b>	
6" x 4" WC (150 mm x 100 mm)	8.00 x 4.50 <b>1002-64WC*</b>	8.00 x 4.50 <b>1002-64WCRC*</b>	8.00 x 4.50 <b>5002-64WCRC*</b>	8.00 x 4.50 <b>1002-64WCEB</b>
6" x 5" (150 mm x 125 mm)	7.39 x 5.63 <b>1002-65</b>	7.50 x 5.62 <b>1002-65RC*</b>		7.50 x 5.62 <b>1002-65EB*</b>
6" x 6" (150 mm x 150 mm)	7.35 x 6.61 <b>1002-66</b>	7.50 x 6.56 <b>1002-66RC*</b>	7.50 x 6.56 <b>5002-66RC*</b>	7.50 x 6.38 <b>1002-66EB</b>
6" x 6" SDR (150 mm x 150 mm)		7.50 x 6.38 <b>1002-66SDRRC*</b>	7.50 x 6.38 <b>5002-66SDRRC*</b>	
6" x 6" WC (150 mm x 150 mm)	8.00 x 6.66 <b>1002-66WC</b>	8.04 x 6.38 <b>1002-66WCRC*</b>	8.04 x 6.38 <b>5002-66WCRC*</b>	
8" x 4" (200 mm x 100 mm)	9.33 x 4.38 <b>1002-84*</b>	9.65 x 4.50 <b>1002-84RC*</b>		9.65 x 4.38 <b>1002-84EB</b>
8" x 6" (200 mm x 150 mm)	9.33 x 6.20 <b>1002-86</b>	9.65 x 6.63 <b>1002-86RC*</b>	9.65 x 6.63 <b>5002-86RC*</b>	9.65 x 6.38 <b>1002-86EB</b>
8" x 6" WC (200 mm x 150 mm)	10.00 x 6.38 <b>1002-86WC*</b>	9.96 x 6.38 <b>1002-86WCRC*</b>		
8" x 8" (200 mm x 200 mm)	9.63 x 8.64 <b>1002-88</b>	9.76 x 8.57 <b>1002-88RC</b>	9.76 x 8.57 <b>5002-88RC</b>	9.65 x 8.38 <b>1002-88EB</b>
8" x 8" SDR (200 mm x 200 mm)			9.75 x 8.38 <b>5002-88SDRRC*</b>	
8" x 8" WC (200 mm x 200 mm)	10.00 x 8.66 <b>1002-88WC</b>	10.00 x 8.66 <b>1002-88WCRC</b>	10.00 x 8.66 <b>5002-88WCRC</b>	
10" x 8" (250 mm x 200 mm)	12.50 x 8.50 <b>1002-10-8*</b>	12.40 x 8.50 <b>1002-10-8RC*</b>		12.40 x 8.50 <b>1002-10-8EB</b>
10" x 10" (250 mm x 250 mm)	12.50 x 10.50 <b>1002-1010</b>	12.40 x 10.75 <b>1002-1010RC*</b>	12.40 x 10.75 <b>5002-1010RC*</b>	12.40 x 10.60 <b>1002-1010EB</b>
10" x 10" WC (250 mm x 250 mm)	12.60 x 10.60 <b>1002-1010WC</b>	12.40 x 10.75 <b>1002-1010WCRC*</b>	12.40 x 10.75 <b>5002-1010WCRC*</b>	
12" x 10" (300 mm x 250 mm)	14.50 x 10.75 <b>1002-1210</b>	14.51 x 10.60 <b>1002-1210RC</b>		14.51 x 10.60 <b>1002-1210EB</b>
12" x 12" (300 mm x 300 mm)	14.50 x 12.50 <b>1002-1212</b>	14.51 x 12.60 <b>1002-1212RC*</b>	14.51 x 12.60 <b>5002-1212RC*</b>	14.51 x 12.60 <b>1002-1212EB</b>
12" x 12" WC (300 mm x 300 mm)	16.29 x 12.39 <b>1002-1212WC</b>	15.25 x 12.60 <b>1002-1212WCRC*</b>		
15" x 10" (375 mm 250 mm)	18.14 x 10.60 <b>1002-1510*</b>	18.14 x 10.60 <b>1002-1510RC*</b>		
15" x 12" (375 mm x 250 mm)	18.14 x 12.60 <b>1002-1512*</b>	18.14 x 12.60 <b>1002-1512RC*</b>		18.14 x 12.60 <b>1002-1512EB</b>
15" x 15" (375 mm x 375 mm)	18.14 x 15.60 <b>1002-1515</b>	18.14 x 15.40 <b>1002-1515RC</b>	18.14 x 15.40 <b>5002-1515RC*</b>	18.14 x 15.40 <b>1002-1515EB</b>

# 1002 Series Couplings

Clay to CI, Plastic, Copper, Steel or Lead

\* Insert bushing included

Red high torque clamps included

new

18" x 18" (450 mm x 450 mm)	21.90 x 18.88 <b>1002-1818</b>	21.90 x 19.00 <b>1002-1818RC</b>	21.90 x 19.00 <b>5002-1818RC</b>
21" x 21" (525 mm x 525 mm)	24.50 x 22.30 <b>1002-2121</b>	25.46 x 22.30 <b>1002-2121RC</b>	
24" x 24" (600 mm x 600 mm)	28.97 x 25.00 <b>1002-2424</b>	28.97 x 25.00 <b>1002-2424RC</b>	
27" x 27" (700 mm x 700 mm)	32.40 x 28.20 <b>1002-2727</b>		

# 1003 Series Couplings

Clay to AC or DI

NOMINAL PIPE DIAMETER	STANDARD	STRONG BACK 1000 RC SERIES	STRONG BACK 5000 RC SERIES	ECCENTRIC
4" x 4" (100 mm x 100 mm)	5.39 x 4.89 <b>1003-44</b>	5.41 x 6.04 <b>1003-44RC</b>	5.41 x 6.04 <b>5003-44RC</b>	
4" x 4" WC (100 mm x 100 mm)	5.29 x 5.00 <b>1003-44WC</b>	5.29 x 6.00 <b>1003-44WCRC*</b>		
4" x 6" (100 mm x 150 mm)	5.17 x 6.81 <b>1003-46</b>	5.17 x 7.12 <b>1003-46RC*</b>		
5" x 4" (125 mm x 100 mm)	6.05 x 5.00 <b>1003-54*</b>			
5" x 5" (125 mm x 100 mm)	6.00 x 5.86 <b>1003-55</b>			
6" x 4" (150 mm x 100 mm)	7.30 x 4.95 <b>1003-64</b>	7.50 x 5.00 <b>1003-64RC*</b>		7.50 x 5.00 <b>1003-64EB</b>
6" x 4" WC (150 mm x 100 mm)	8.01 x 5.00 <b>1003-64WC*</b>			
6" x 5" (150 mm x 125 mm)	7.35 x 5.90 <b>1003-65*</b>			
6" x 6" (150 mm x 150 mm)	7.31 x 6.99 <b>1003-66</b>	7.25 x 6.84 <b>1003-66RC*</b>	7.25 x 6.84 <b>5003-66RC</b>	
6" x 6" WC (150 mm x 150 mm)	8.01 x 6.80 <b>1003-66WC</b>	8.00 x 6.90 <b>1003-66WCRC</b>	8.00 x 6.90 <b>5003-66WCRC</b>	
8" x 4" (200 mm x 100 mm)	8.52 x 5.00 <b>1003-84*</b>			
8" x 6" (200 mm x 150 mm)	9.63 x 7.20 <b>1003-86*</b>			
8" x 6" WC (200 mm x 150 mm)	10.00 x 7.20 <b>1003-86WC*</b>	9.96 x 7.20 <b>1003-86WCRC*</b>		
8" x 8" (200 mm x 200 mm)	9.50 x 9.00 <b>1003-88</b>	9.75 x 9.06 <b>1003-88RC</b>	9.75 x 9.06 <b>5003-88RC</b>	
8" x 8" WC (200 mm x 200 mm)	9.96 x 9.05 <b>1003-88WC*</b>	10.03 x 10.77 <b>1003-88WCRC*</b>		
10" x 8" (250 mm x 200 mm)	12.50 x 9.05 <b>1003-10-8*</b>			12.40 x 9.05 <b>1003-10-8EB</b>
10" x 10" (250 mm x 250 mm)	12.40 x 11.12 <b>1003-1010*</b>	12.40 x 11.02 <b>1003-1010RC*</b>	12.40 x 11.02 <b>5003-1010RC*</b>	
10" x 10" WC (250 mm x 250 mm)	12.40 x 11.12 <b>1003-1010WC*</b>	12.40 x 11.12 <b>1003-1010WCRC*</b>		
12" x 10" (300 mm x 250 mm)	14.50 x 11.12 <b>1003-1210*</b>			
12" x 12" (300 mm x 300 mm)	15.00 x 13.29 <b>1003-1212</b>	14.51 x 13.20 <b>1003-1212RC*</b>	14.51 x 13.20 <b>5003-1212RC*</b>	

## 1003 Series Couplings

Clay to AC or DI

\* Insert bushing included **Red** high torque clamps included   new

12" x 12" WC (300 mm x 300 mm)	15.25 x 13.20 <b>1003-1212WC*</b>	15.25 x 13.20 <b>1003-1212WCRC*</b>	
15" x 10" (375 mm x 250 mm)	18.14 x 11.12 <b>1003-1510*</b>		18.14 x 11.12 <b>1003-1510EB</b>
15" x 12" (375 mm x 300 mm)	18.14 x 13.20 <b>1003-1512*</b>	18.14 x 13.20 <b>1003-1512RC*</b>	18.14 x 13.20 <b>1003-1512EB</b>
15" x 15" (375 mm x 375 mm)	18.14 x 16.50 <b>1003-1515</b>	18.14 x 16.50 <b>1003-1515RC</b>	
15" x 16" (375 mm x 410 mm)	18.10 x 17.80 <b>1003-1516</b>	18.10 x 17.80 <b>1003-1516RC</b>	18.10 x 18.10 <b>5003-1516RC</b>
18" x 18" (450 mm x 450 mm)	21.60 x 19.50 <b>1003-1818</b>	21.90 x 19.50 <b>1003-1818RC</b>	
24" x 24" (600 mm x 600 mm)	28.90 x 25.80 <b>1003-2424</b>	28.90 x 25.80 <b>1003-2424RC</b>	

## 1004 Series Couplings

Concrete to Concrete

NOMINAL PIPE DIAMETER	STANDARD	STRONG BACK 1000 RC SERIES	STRONG BACK 5000 RC SERIES	ECCENTRIC
4" x 4" (100 mm x 100 mm)	5.51 x 5.51 <b>1004-44</b>	5.51 x 5.51 <b>1004-44RC</b>	5.51 x 5.51 <b>5004-44RC</b>	
6" x 4" (150 mm x 100 mm)	7.67 x 5.62 <b>1004-64*</b>			
6" x 6" (150 mm x 150 mm)	7.58 x 7.58 <b>1004-66</b>	7.58 x 7.58 <b>1004-66RC</b>	7.58 x 7.58 <b>5004-66RC</b>	
8" x 6" (200 mm x 150 mm)	10.25 x 7.80 <b>1004-86*</b>			
8" x 8" (200 mm x 200 mm)	10.38 x 10.38 <b>1004-88</b>	10.38 x 10.38 <b>1004-88RC</b>	10.38 x 10.38 <b>5004-88RC</b>	
10" x 8" (250 mm x 200 mm)	12.50 x 10.65 <b>1004-10-8</b>			
10" x 10" (250 mm x 250 mm)	12.40 x 12.40 <b>1004-1010</b>	12.40 x 12.40 <b>1004-1010RC</b>	12.40 x 12.40 <b>5004-1010RC</b>	
10" x 10" LC (250 mm x 250 mm)	14.00 x 14.00 <b>1004-1010LC</b>			
12" x 10" (300 mm x 250 mm)	15.38 x 12.60 <b>1004-1210*</b>			15.38 x 12.60 <b>1004-1210EB</b>
12" x 12" (300 mm x 300 mm)	15.38 x 15.38 <b>1004-1212</b>	15.25 x 15.25 <b>1004-1212RC</b>	15.25 x 15.25 <b>5004-1212RC</b>	
12" x 12" LC (300 mm x 300 mm)	16.10 x 16.10 <b>1004-1212LC</b>	16.10 x 16.10 <b>1004-1212LCRC</b>	16.10 x 16.10 <b>5004-1212LCRC</b>	
15" x 15" (375 mm x 375 mm)	19.70 x 19.70 <b>1004-1515</b>	19.74 x 19.74 <b>1004-1515RC</b>		
18" x 18" (450 mm x 450 mm)	22.50 x 22.50 <b>1004-1818</b>	22.50 x 22.50 <b>1004-1818RC</b>		
21" x 21" (525 mm x 525 mm)	26.70 x 26.70 <b>1004-2121</b>			
24" x 24" (600 mm x 600 mm)	30.50 x 30.50 <b>1004-2424</b>	30.50 x 30.50 <b>1004-2424RC</b>		
27" x 27" (700 mm x 700 mm)	34.00 x 34.00 <b>1004-2727</b>	34.00 x 34.00 <b>1004-2727RC</b>		



# 1005 Series Couplings

Concrete to Clay

\* Insert bushing included Red high torque clamps included   new

NOMINAL PIPE DIAMETER	STANDARD	STRONG BACK 1000 RC SERIES	STRONG BACK 5000 RC SERIES	ECCENTRIC
4" x 4" (100 mm x 100 mm)	5.51 x 5.00 <b>1005-44*</b>	5.51 x 5.00 <b>1005-44RC*</b>		
6" x 4" (150 mm x 100 mm)	7.58 x 5.00 <b>1005-64*</b>			7.58 x 5.00 <b>1005-64EB</b>
6" x 6" (150 mm x 150 mm)	7.58 x 7.38 <b>1005-66*</b>			
8" x 6" (200 mm x 150 mm)	10.38 x 6.15 <b>1005-86*</b>			
8" x 8" (200 mm x 200 mm)	10.38 x 7.20 <b>1005-88*</b>	10.38 x 9.65 <b>1005-88RC*</b>		
10" x 10" (250 mm x 250 mm)	12.40 x 12.40 <b>1005-1010</b>			
12" x 10" (300 mm x 250 mm)	15.38 x 12.60 <b>1005-1210*</b>			15.38 x 12.60 <b>1005-1210EB</b>
12" x 12" (300 mm x 300 mm)	15.38 x 14.38 <b>1005-1212*</b>			
15" x 15" (375 mm x 375 mm)	19.70 x 17.40 <b>1005-1515*</b>	19.70 x 17.40 <b>1005-1515RC*</b>		

# 1006 Series Couplings

Concrete to CI, Plastic, Copper, Steel or Lead

NOMINAL PIPE DIAMETER	STANDARD	STRONG BACK 1000 RC SERIES	STRONG BACK 5000 RC SERIES	ECCENTRIC
4" x 4" (100 mm x 100 mm)	5.57 x 4.31 <b>1006-44</b>	5.64 x 4.51 <b>1006-44RC</b>	5.64 x 4.51 <b>5006-44RC</b>	5.51 x 4.50 <b>1006-44EB</b>
4" x 4" SDR (100 mm x 100 mm)			5.51 x 4.38 <b>5006-44SDRRC*</b>	
4" x 4" LC (100 mm x 100 mm)	5.88 x 4.50 <b>1006-44LC</b>	5.88 x 4.50 <b>1006-LCRC</b>	5.88 x 4.50 <b>5006-LCRC</b>	
5" x 4" (125 mm x 125 mm)	5.78 x 4.47 <b>1006-54*</b>			
6" x 4" (150 mm x 100 mm)	7.75 x 4.31 <b>1006-64</b>	7.58 x 4.38 <b>1006-64RC*</b>	7.58 x 4.38 <b>5006-64RC*</b>	7.58 x 4.38 <b>1006-64EB</b>
6" x 4" SDR (150 mm x 100 mm)			7.50 x 4.38 <b>5006-64SDRRC*</b>	
6" x 5" (150 mm x 125 mm)	7.66 x 5.50 <b>1006-65*</b>			7.66 x 5.50 <b>1006-65EB</b>
6" x 6" (150 mm x 150 mm)	7.66 x 6.65 <b>1006-66</b>	7.63 x 6.63 <b>1006-66RC</b>	7.63 x 6.63 <b>5006-66RC</b>	7.58 x 6.38 <b>1006-66EB</b>
6" x 6" LC (150 mm x 150 mm)		8.04 x 6.58 <b>1006-66LCRC</b>	8.04 x 6.58 <b>5006-66LCRC</b>	
8" x 4" (200 mm x 100 mm)	10.25 x 4.38 <b>1006-84*</b>			10.38 x 4.50 <b>1006-84EB</b>
8" x 6" (200 mm x 150 mm)	10.25 x 6.38 <b>1006-86*</b>	10.38 x 6.38 <b>1006-86RC*</b>	10.38 x 6.38 <b>5006-86RC*</b>	10.38 x 6.38 <b>1006-86EB</b>
8" x 8" (200 mm x 200 mm)	10.25 x 8.50 <b>1006-88</b>	10.49 x 8.63 <b>1006-88RC</b>	10.49 x 8.63 <b>5006-88RC</b>	10.38 x 8.50 <b>1006-88EB</b>
8" x 8" LC (200 mm x 200 mm)	12.50 x 8.63 <b>1006-88LC</b>			
10" x 8" (250 mm x 200 mm)	12.50 x 8.38 <b>1006-10-8*</b>			12.40 x 8.38 <b>1006-10-8EB</b>

## 1006 Series Couplings

Concrete to CI, Plastic, Copper, Steel or Lead

\* Insert bushing included **Red** high torque clamps included

 new

10" x 10" (250 mm x 250 mm)	12.60 x 10.60 <b>1006-1010</b>	12.40 x 10.75 <b>1006-1010RC</b>	12.40 x 10.75 <b>5006-1010RC*</b>	
12" x 10" (300 mm x 250 mm)	16.29 x 10.75 <b>1006-1210*</b>	15.38 x 10.60 <b>1006-1210RC*</b>		15.38 x 10.60 <b>1006-1210EB</b>
12" x 10" (300 mm x 250 mm)	16.10 x 10.60 <b>1006-1210LC*</b>			
12" x 12" (300 mm x 300 mm)	16.29 x 12.39 <b>1006-1212</b>	15.25 x 12.60 <b>1006-1212RC*</b>	15.25 x 12.60 <b>5006-1212RC*</b>	15.38 x 12.60 <b>1006-1212EB</b>
12" x 12" LC (300 mm x 300 mm)	16.10 x 12.60 <b>1006-1212LC*</b>	16.10 x 12.60 <b>1006-1212LCRC*</b>	16.10 x 12.60 <b>5006-1212LCRC*</b>	16.10 x 12.60 <b>1006-1212LCB*</b>
15" x 10" (375 mm x 250 mm)	19.82 x 10.60 <b>1006-1510*</b>			
15" x 12" (375 mm x 300 mm)	19.82 x 12.60 <b>1006-1512*</b>	19.82 x 12.60 <b>1006-1512RC*</b>		19.70 x 12.60 <b>1006-1512EB</b>
15" x 15" (375 mm x 375 mm)	19.82 x 15.43 <b>1006-1515</b>	19.74 x 15.40 <b>1006-1515RC*</b>	19.74 x 15.40 <b>5006-1515RC</b>	
18" x 18" (450 mm x 450 mm)	22.50 x 18.90 <b>1006-1818*</b>	22.50 x 18.90 <b>1006-1818RC*</b>	22.50 x 18.90 <b>5006-1818RC*</b>	
21" x 21" (525 mm x 525 mm)	26.70 x 22.30 <b>1006-2121*</b>	26.70 x 22.30 <b>1006-2121RC*</b>		
24" x 24" (600 mm x 600 mm)	30.50 x 25.00 <b>1006-2424*</b>	30.50 x 25.00 <b>1006-2424RC*</b>		
27" x 27" (700 mm x 700 mm)	34.00 x 28.00 <b>1006-2727*</b>	34.00 x 28.00 <b>1006-2727RC*</b>	34.00 x 28.00 <b>5006-2727RC*</b>	

## 1051 Series Couplings

AC, DI to CI, Plastic, Copper, Steel or Lead

NOMINAL PIPE DIAMETER	STANDARD	STRONG BACK 1000 RC SERIES	STRONG BACK 5000 RC SERIES	ECCENTRIC
4" x 4" (100 mm x 100 mm)	4.80 x 4.53 <b>1051-44</b>	4.80 x 4.39 <b>1051-44RC</b>	4.80 x 4.39 <b>5051-44RC</b>	4.25 x 4.38 <b>1051-44EB</b>
4" x 6" (100 mm x 150 mm)	4.75 x 6.60 <b>1051-46*</b>	4.75 x 6.60 <b>1051-46RC*</b>	4.75 x 6.60 <b>1051-46RC*</b>	
5" x 4" (125 mm x 100 mm)	5.75 x 4.47 <b>1051-54</b>			6.00 x 4.38 <b>1051-54EB</b>
5" x 5" (125 mm x 125 mm)	6.05 x 5.54 <b>1051-55</b>	5.90 x 5.50 <b>1051-55RC*</b>		
6" x 4" (150 mm x 100 mm)	6.84 x 4.30 <b>1051-64</b>	6.95 x 4.38 <b>1051-64RC*</b>	6.95 x 4.38 <b>5051-64RC*</b>	6.95 x 4.38 <b>1051-64EB</b>
6" x 5" (150 mm x 125 mm)	6.81 x 5.17 <b>1051-65</b>	6.95 x 5.50 <b>1051-65RC*</b>		9.05 x 4.38 <b>1051-65EB</b>
6" x 6" (150 mm x 150 mm)	6.81 x 6.39 <b>1051-66</b>	6.96 x 6.60 <b>1051-66RC</b>	6.96 x 6.60 <b>5051-66RC</b>	
8" x 4" (200 mm x 100 mm)	9.12 x 4.38 <b>1051-84*</b>	9.12 x 4.50 <b>1051-84RC*</b>		9.05 x 4.38 <b>1051-84EB</b>
8" x 6" (200 mm x 150 mm)	9.12 x 6.38 <b>1051-86*</b>	9.12 x 6.38 <b>1051-86RC*</b>		9.05 x 6.38 <b>1051-86EB</b>
8" x 8" (200 mm x 200 mm)	9.12 x 8.49 <b>1051-88</b>	9.25 x 8.51 <b>1051-88RC</b>	9.25 x 8.51 <b>5051-88RC</b>	
10" x 8" (250 mm x 200 mm)	11.05 x 8.38 <b>1051-10-8*</b>	11.02 x 8.38 <b>1051-10-8RC*</b>		
10" x 10" (250 mm x 250 mm)	11.05 x 10.65 <b>1051-1010</b>	11.02 x 10.52 <b>1051-1010RC</b>	11.02 x 10.52 <b>5051-1010RC</b>	

# 1051 Series Couplings

AC, DI to CI, Plastic, Copper, Steel or Lead

\* Insert bushing included

**Red** high torque clamps included

 new

<b>10" x 10" (250 mm x 250 mm)</b>	11.05 x 10.65 <b>1051-1010</b>	11.02 x 10.52 <b>1051-1010RC</b>	11.02 x 10.52 <b>5051-1010RC</b>	
<b>12" x 10" (300 mm x 250 mm)</b>	13.00 x 10.75 <b>1051-1210*</b>	13.00 x 10.60 <b>1051-1210RC*</b>		13.20 x 10.60 <b>1051-1210EB</b>
<b>12" x 12" (300 mm x 300 mm)</b>	13.00 x 12.38 <b>1051-1212</b>	13.37 x 12.60 <b>1051-1212RC*</b>	13.37 x 12.60 <b>5051-1212RC*</b>	
<b>12" x 15" (300 mm x 375 mm)</b>	15.44 x 13.20 <b>1051-1215*</b>			
<b>15" x 10" (375 mm x 250 mm)</b>	15.90 x 10.60 <b>1051-1510*</b>			15.90 x 10.60 <b>1051-1510EB</b>
<b>15" x 12" (375 mm x 300 mm)</b>	15.90 x 12.60 <b>1051-1512*</b>			
<b>15" x 15" (375 mm x 375 mm)</b>	15.90 x 15.90 <b>1051-1515</b>	15.90 x 15.40 <b>1051-1515RC*</b>		
<b>18" x 18" (450 mm x 450 mm)</b>	19.75 x 18.75 <b>1051-1818</b>	19.75 x 18.75 <b>1051-1818RC</b>		
<b>24" x 24" (600 mm x 600 mm)</b>	25.80 x 25.10 <b>1051-2424</b>	25.80 x 25.10 <b>1051-2424RC</b>		

# 1055 Series Couplings

AC or DI to AC or DI

Resources

NOMINAL PIPE DIAMETER	STANDARD	STRONG BACK 1000 RC SERIES	STRONG BACK 5000 RC SERIES	ECCENTRIC
<b>4" x 4" (100 mm x 100 mm)</b>	4.76 x 4.76 <b>1055-44</b>	4.75 x 4.75 <b>1055-44RC</b>	4.75 x 4.75 <b>5055-44RC</b>	
<b>5" x 4" (125 mm x 100 mm)</b>	6.05 x 5.00 <b>1055-54*</b>			
<b>5" x 5" (125 mm x 125 mm)</b>	6.05 x 6.05 <b>1055-55</b>			
<b>6" x 4" (150 mm x 100 mm)</b>	6.81 x 4.80 <b>1055-64</b>	6.95 x 5.00 <b>1055-64RC*</b>		6.95 x 5.00 <b>1055-64EB</b>
<b>6" x 5" (150 mm x 125 mm)</b>	6.84 x 5.89 <b>1055-65</b>			6.95 x 5.90 <b>1055-65EB</b>
<b>6" x 6" (150 mm x 150 mm)</b>	6.95 x 6.95 <b>1055-66</b>	6.95 x 6.95 <b>1055-66RC</b>	6.95 x 6.95 <b>5055-66RC</b>	
<b>8" x 4" (200 mm x 100 mm)</b>	9.04 x 5.00 <b>1055-84*</b>			9.04 x 5.00 <b>1055-84EB</b>
<b>8" x 6" (200 mm x 150 mm)</b>	9.04 x 6.80 <b>1055-86*</b>	9.04 x 6.80 <b>1055-86RC*</b>	9.04 x 6.80 <b>5055-86RC*</b>	9.04 x 6.80 <b>1055-86EB</b>
<b>8" x 8" (200 mm x 200 mm)</b>	9.04 x 9.04 <b>1055-88</b>	9.04 x 9.04 <b>1055-88RC</b>	9.04 x 9.04 <b>5055-88RC</b>	
<b>10" x 8" (250 mm x 200 mm)</b>	10.86 x 9.05 <b>1055-10-8*</b>			10.86 x 9.05 <b>1055-10-8EB*</b>
<b>10" x 10" (250 mm x 250 mm)</b>	10.86 x 10.86 <b>1055-1010</b>	10.86 x 10.86 <b>1055-1010RC</b>	10.86 x 10.86 <b>5055-1010RC</b>	
<b>12" x 8" (300 mm x 200 mm)</b>	13.00 x 9.05 <b>1055-12-8*</b>			
<b>12" x 10" (300 mm x 250 mm)</b>	13.20 x 11.12 <b>1055-1210*</b>	13.20 x 11.12 <b>1055-1210RC*</b>		13.20 x 11.12 <b>1055-1210EB</b>
<b>12" x 12" (300 mm x 300 mm)</b>	13.20 x 13.20 <b>1055-1212</b>	13.37 x 13.37 <b>1055-1212RC</b>	13.37 x 13.37 <b>5055-1212RC</b>	
<b>15" x 10" (375 mm x 250 mm)</b>	16.80 x 11.12 <b>1055-1510*</b>			



## 1055 Series Couplings

AC or DI to AC or DI

\* Insert bushing included **Red** high torque clamps included   new

<b>15" x 12" (375 mm x 300 mm)</b>	16.80 x 13.20 <b>1055-1512*</b>	16.80 x 13.20 <b>1055-1512RC*</b>	16.80 x 13.20 <b>1055-1512EB</b>
<b>15" x 15" (375 mm x 375 mm)</b>	16.80 x 16.80 <b>1055-1515</b>	16.30 x 16.30 <b>1055-1515RC</b>	
<b>18" x 18" (450 mm x 450 mm)</b>	19.70 x 19.70 <b>1055-1818</b>	19.70 x 19.70 <b>1055-1818RC</b>	
<b>24" x 24" (600 mm x 600 mm)</b>	25.80 x 27.31 <b>1055-2424</b>	25.80 x 27.31 <b>1055-2424RC</b>	

## 1056 Series Couplings

Cl, Plastic, Copper, Steel or Lead to Cl, Plastic, Copper, Steel or Lead

NOMINAL PIPE DIAMETER	STANDARD	STRONG BACK 1000 RC SERIES	STRONG BACK 5000 RC SERIES	ECCENTRIC
<b>0.75" x 0.75" (19 mm x 19 mm)</b>	1.05 x 1.05 <b>1056-075</b>			
<b>1" x 1" (25 mm x 25 mm)</b>	1.31 x 1.31 <b>1056-100</b>			
<b>1.25" x 1.25" (32 mm x 32 mm)</b>	1.63 x 1.63 <b>1056-125</b>			
<b>1.50" x 1.25" (38 mm x 32 mm)</b>	1.94 x 1.63 <b>1056-150/125</b>			
<b>1.5" x 1.50" (38 mm x 38 mm)</b>	1.94 x 1.94 <b>1056-150</b>	1.94 x 1.94 <b>1056-150RC</b>		
<b>2" x 1.50" (51 mm x 38 mm)</b>	2.41 x 1.84 <b>1056-215</b>	2.41 x 1.84 <b>1056-215RC</b>		
<b>2" x 2" (51 mm x 51 mm)</b>	2.41 x 2.41 <b>1056-22</b>	2.41 x 2.41 <b>1056-22RC</b>		
<b>2.50" x 1.25" (64 mm x 32 mm)</b>	2.88 x 1.63 <b>1056-250/125</b>	2.88 x 1.63 <b>1056-250/125RC</b>		
<b>2.50" x 1.50" (64 mm x 38 mm)</b>	2.88 x 1.84 <b>1056-250/150</b>	2.88 x 1.84 <b>1056-250/150RC</b>		
<b>2.50" x 2" (64 mm x 51 mm)</b>	2.88 x 2.38 <b>1056-250/22</b>	2.88 x 2.38 <b>1056-250/22RC</b>		
<b>2.50" x 2.50" (64 mm x 64 mm)</b>	2.88 x 2.88 <b>1056-250</b>	2.88 x 2.88 <b>1056-250RC</b>		
<b>3" x 1.50" (76 mm x 38 mm)</b>	3.35 x 1.91 <b>1056-315</b>			3.46 x 1.90 <b>1056-315EB</b>
<b>3" x 2.50" (76 mm x 64 mm)</b>	3.55 x 2.88 <b>1056-3/250</b>	3.55 x 2.88 <b>1056-3/250RC</b>		
<b>3" x 3" (76 mm x 76 mm)</b>	3.46 x 3.46 <b>1056-33</b>	3.46 x 3.46 <b>1056-33RC</b>	3.46 x 3.46 <b>5056-33RC</b>	
<b>4" x 1.50" (100 mm x 38 mm)</b>	4.39 x 1.91 <b>1056-415</b>			
<b>4" x 4" (100 mm x 100 mm)</b>	4.58 x 4.58 <b>1056-44</b>	4.58 x 4.58 <b>1056-44RC</b>	4.58 x 4.58 <b>5056-44RC</b>	
<b>5" x 4" (125 mm x 100 mm)</b>	5.57 x 4.26 <b>1056-54</b>	5.52 x 4.38 <b>1056-54RC</b>	5.52 x 4.38 <b>5056-54RC</b>	5.52 x 4.50 <b>1056-54EB</b>
<b>5" x 5" (125 mm x 125 mm)</b>	5.52 x 5.52 <b>1056-55</b>	5.52 x 5.52 <b>1056-55RC</b>	5.52 x 5.52 <b>5056-55RC</b>	
<b>6" x 4" (150 mm x 100 mm)</b>	6.61 x 4.46 <b>1056-64</b>	6.60 x 4.50 <b>1056-64RC*</b>	6.60 x 4.50 <b>5056-64RC*</b>	6.60 x 4.50 <b>1056-64EB</b>
<b>6" x 5" (150 mm x 125 mm)</b>	6.48 x 5.46 <b>1056-65</b>	6.60 x 5.62 <b>1056-65RC</b>	6.60 x 5.62 <b>5056-65RC</b>	6.60 x 5.50 <b>1056-65EB</b>

# 1056 Series Couplings

Cl, Plastic, Copper, Steel or Lead to  
Cl, Plastic, Copper, Steel or Lead

\* Insert bushing included **Red** high torque clamps included   new

<b>6" x 6" (150 mm x 150 mm)</b>	6.60 x 6.60 <b>1056-66</b>	6.60 x 6.60 <b>1056-66RC</b>	6.60 x 6.60 <b>5056-66RC</b>	
<b>8" x 4" (200 mm x 150 mm)</b>	8.51 x 4.38 <b>1056-84*</b>	8.64 x 4.50 <b>1056-84RC*</b>		8.64 x 4.38 <b>1056-84EB</b>
<b>8" x 6" (200 mm x 150 mm)</b>	8.51 x 6.38 <b>1056-86</b>	8.64 x 6.38 <b>1056-86RC*</b>	8.64 x 6.38 <b>5056-86RC</b>	8.64 x 6.38 <b>1056-86EB</b>
<b>8" x 8" (200 mm x 200 mm)</b>	8.64 x 8.64 <b>1056-88</b>	8.64 x 8.64 <b>1056-88RC</b>	8.64 x 8.64 <b>5056-88RC</b>	
<b>10" x 8" (250 mm x 200 mm)</b>	10.25 x 8.42 <b>1056-10-8</b>	10.63 x 8.62 <b>1056-10-8RC</b>	10.63 x 8.62 <b>5056-10-8RC</b>	10.63 x 8.38 <b>1056-10-8EB</b>
<b>10" x 10" (250 mm x 250 mm)</b>	10.63 x 10.63 <b>1056-1010</b>	10.63 x 10.63 <b>1056-1010RC</b>	10.63 x 10.63 <b>5056-1010RC</b>	
<b>12" x 10" (300 mm x 250 mm)</b>	12.50 x 10.65 <b>1056-1210</b>	12.52 x 10.75 <b>1056-1210RC</b>	12.52 x 10.75 <b>5056-1210RC</b>	12.52 x 10.60 <b>1056-1210EB*</b>
<b>12" x 12" (300 mm x 300 mm)</b>	12.52 x 12.52 <b>1056-1212</b>	12.52 x 12.52 <b>1056-1212RC</b>	12.52 x 12.52 <b>5056-1212RC</b>	
<b>15" x 10" (375 mm x 250 mm)</b>	15.44 x 10.60 <b>1056-1510</b>			15.44 x 10.60 <b>1056-1510EB</b>
<b>15" x 12" (375 mm x 300 mm)</b>	15.75 x 12.25 <b>1056-1512</b>	15.12 x 12.60 <b>1056-1512RC</b>		15.44 x 12.60 <b>1056-1512EB</b>
<b>15" x 15" (375 mm x 375 mm)</b>	15.44 x 15.44 <b>1056-1515</b>	15.92 x 15.92 <b>1056-1515RC</b>	15.92 x 15.92 <b>5056-1515RC</b>	
<b>18" x 18" (450 mm x 450 mm)</b>	19.00 x 19.00 <b>1056-1818</b>	19.10 x 19.00 <b>1056-1818RC</b>	19.10 x 19.10 <b>5056-1818RC</b>	
<b>21" x 21" (525 mm x 525 mm)</b>	22.50 x 22.50 <b>1056-2121</b>	22.50 x 22.50 <b>1056-2121RC</b>		
<b>24" x 24" (600 mm x 600 mm)</b>	26.61 x 10.00 <b>1056-2424</b>	25.10 x 25.10 <b>1056-2424RC</b>	25.10 x 25.10 <b>5056-2424RC</b>	
<b>27" x 27" (700 mm x 700 mm)</b>	28.30 x 28.30 <b>1056-2727</b>	28.30 x 28.30 <b>1056-2727RC</b>		

# 1057 Series Couplings

Concrete to DI

NOMINAL PIPE DIAMETER	STANDARD	STRONG BACK 1000 RC SERIES	STRONG BACK 5000 RC SERIES	ECCENTRIC
<b>4" x 4" (100 mm x 100 mm)</b>	5.51 x 5.00 <b>1057-44*</b>	5.51 x 5.00 <b>1057-44RC*</b>		
<b>6" x 4" (150 mm x 100 mm)</b>	7.58 x 5.00 <b>1057-64*</b>			7.58 x 5.00 <b>1057-64EB*</b>
<b>6" x 6" (150 mm x 150 mm)</b>	7.58 x 6.80 <b>1057-66*</b>	7.58 x 6.80 <b>1057-66RC*</b>		
<b>6" x 8" (150 mm x 200 mm)</b>	9.04 x 7.80 <b>1057-68*</b>	9.04 x 7.80 <b>1057-68RC*</b>		9.04 x 7.80 <b>1057-68EB*</b>
<b>8" x 6" (200 mm x 150 mm)</b>	10.00 x 6.80 <b>1057-86*</b>	10.00 x 6.80 <b>1057-86RC*</b>		
<b>8" x 8" (200 mm x 200 mm)</b>	10.00 x 8.92 <b>1057-88</b>	10.00 x 8.92 <b>1057-88RC</b>		
<b>10" x 10" (250 mm x 250 mm)</b>	12.40 x 11.12 <b>1057-1010*</b>	12.40 x 11.12 <b>1057-1010RC*</b>		
<b>10" x 10" LC (250 mm x 250 mm)</b>			14.00 x 11.12 <b>5057-1010LCRC*</b>	
<b>12" x 6" (300 mm x 150 mm)</b>	15.25 x 6.80 <b>1057-12-6*</b>			15.25 x 6.80 <b>1057-12-6EB*</b>

# 1057 Series Couplings

Concrete to DI

\* Insert bushing included Red high torque clamps included   new

<b>12" x 8" (300 mm x 200 mm)</b>	16.28 x 9.05 <b>1057-12-8*</b>		16.25 x 6.80 <b>1057-12-8EB*</b>
<b>12" x 10" (300 mm x 250 mm)</b>	16.28 x 11.12 <b>1057-1210*</b>		
<b>12" x 10" LC (300 mm x 250 mm)</b>	16.10 x 11.12 <b>1057-1210LC*</b>		
<b>12" x 12" (300 mm x 300 mm)</b>	15.25 x 13.20 <b>1057-1212*</b>	16.10 x 13.20 <b>1057-1212RC*</b>	
<b>12" x 12" LC (300 mm x 300 mm)</b>	16.10 x 13.20 <b>1057-1212LC*</b>	16.10 x 13.20 <b>1057-1212LCRC*</b>	16.10 x 13.20 <b>5057-1212LCRC*</b>
<b>15" x 8" (375 mm x 200 mm)</b>	16.28 x 9.05 <b>1057-15-8*</b>		
<b>15" x 10" (375 mm x 250 mm)</b>	16.28 x 11.12 <b>1057-1510*</b>		
<b>15" x 12" (375 mm x 300 mm)</b>	16.28 x 13.20 <b>1057-1512*</b>	19.70 x 13.20 <b>1057-1512RC*</b>	
<b>15" x 15" (375 mm x 375 mm)</b>	19.70 x 16.50 <b>1057-1515*</b>	19.70 x 16.50 <b>1057-1515RC*</b>	





# Waterworks Market Sales Reps

**1. David Gooding, Inc.**

Brockton, MA  
(508) 894-2000  
ME, NH, VT, MA, RI, CT

**2. Empire State Assoc.**

Ballston Spa, NY  
(518) 602-0271  
NY

**3. Saga Sales, Inc.**

Englewood, NJ  
(908) 505-9990  
New York City, Long Island,  
Northern New Jersey

**4. Charles Morrow & Assoc.**

Buckhannon, WV  
(304) 472-9005  
E. PA, S. NJ, DE, VA, D.C., MD

**5. Fehr & Howard Sales Inc.**

Greensburg, PA  
(724) 838-9394  
West PA, WV

**6. Hydrosource**

Chagrin Falls, OH  
(440) 247-9150  
IN, OH, Lower MI

**7. Eaton Mechanical Sales**

Prarie View, IL  
(847) 980-7253  
N. IL

**8. Mack McClain & Assoc.**

Olathe, KS  
(913) 339-6677  
KS, W. MO  
St. Louis, MO  
(314) 894-8188  
S. IL, E. MO

**9. Mankin & Assoc.**

Earlham, IA  
(515) 758-2956  
IA, NE

**10. McCullough & Assoc.**

Edina, MN  
(952) 946-0126  
MN, WI, ND, SD, Upper MI

**11. Repmasters, Inc.**

Commerce City, CO  
(303) 286-7575  
CO, MT, WY

**12. McGregor & Assoc.**

West Jordan, UT  
(801) 566-8225  
UT, ID

**13. Gordon & Assoc.**

Vancouver, WA  
(360) 566-1470  
WA, OR, AK

**14. RD/Kincaide & Assoc.**

Benicia, CA  
(707) 745-3655  
N. CA, N. NV

**15. Stan Roberts & Assoc., Inc.**

Houston, TX  
(713) 224-9845  
South TX  
Dallas, TX  
(214) 637-2816  
North TX

**16. PSA**

Little Rock, AR  
(501) 312-8700  
AR

**17. OK! Sales**

Broken Arrow, OK  
(405) 794-5200  
OK

**18. Billingsley BWC**

Kenner, LA  
(504) 602-8100  
LA, MS

**19. Wm. M. McClain Co, Inc.**

Nashville, TN  
(615) 226-9601  
TN

**20. Banks & Head Agency**

Anniston, AL  
(256) 235-9000  
AL

**21. Buchanan Sales**

Kennesaw, GA  
(770) 425-6028  
GA

**22. L.J. Ruffin & Assoc.**

Orlando, FL  
(407) 291-2341  
FL

**23. Ultratech Water Resources**

Shelby, NC  
(704) 445-0220  
NC, SC

**24. Pinnacle Marketing**

Albuquerque, NM  
(502) 345-2700  
NM, El Paso, TX

**25. Kemper Sales & Assoc.**

Nicholasville, KY  
(859) 881-8624  
KY

**26. New Horizon Sales, Inc.**

Phoenix, AZ  
(602) 437-4795  
Clark County, NV, AZ

**27. Delco Sales, LLC**

Anaheim, CA  
(714) 888-2444  
S. CA, HI

## PUERTO RICO

**33. Inter American Builders Agencies**

Carolina, PR  
(787) 752-0200  
Puerto Rico

## MEXICO

**34. Ardent Sales**

Long Beach, CA  
(562) 552-4169  
Mexico

## CANADA

**40. Barclay Sales LTD.**

Port Coquitlam, BC  
(604) 945-1010

**41. Spectrum Sales Agencies 1982 LTD.**

Calgary, Alberta  
(403) 255-8332

Edmonton, Alberta  
(780) 486-2525

**42. Jones Goodridge**

Winnipeg, Manitoba  
(204) 632-6221

Regina, Sask  
(306) 530-9056

Saskatoon, Sask  
(306) 933-4377

**43. Showerline Sales LTD.**

London, Ontario  
(519) 657-2694

Waterloo, Ontario  
(519) 885-1578

**44. Armco Agencies LTD.**

Mississauga, Ontario  
(905) 238-8448

**45. Ventes Bergeron Sales**

Russell, Ontario  
(613) 445-4170

**46. Northern Mechanical Sales**

Garson, Ontario  
(705) 693-2715

**47. Agencies J. Pierre Sylvain, Inc.**

Boucherville, Que.  
(450) 655-9588

Quebec, PQ  
(418) 570-0703

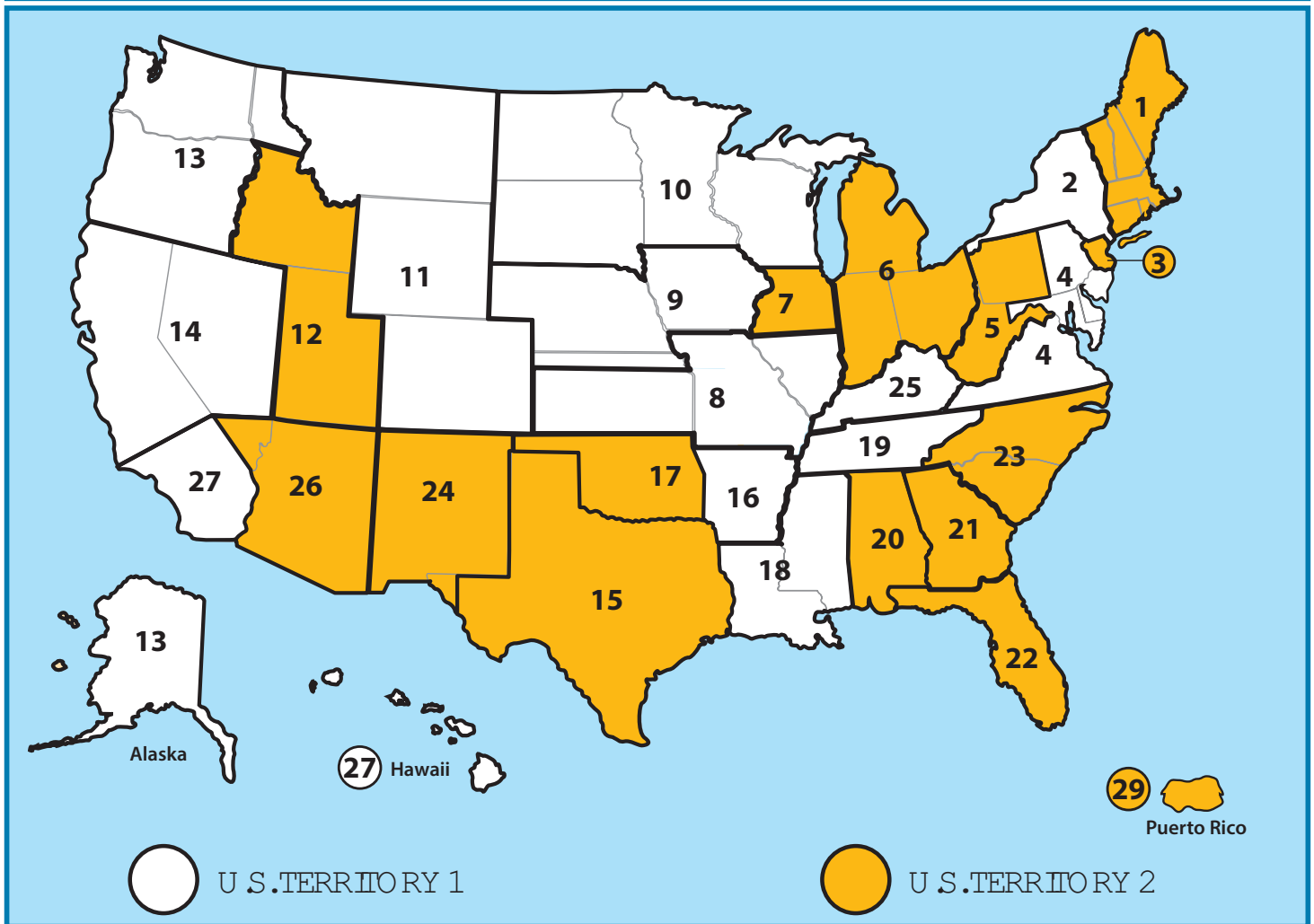
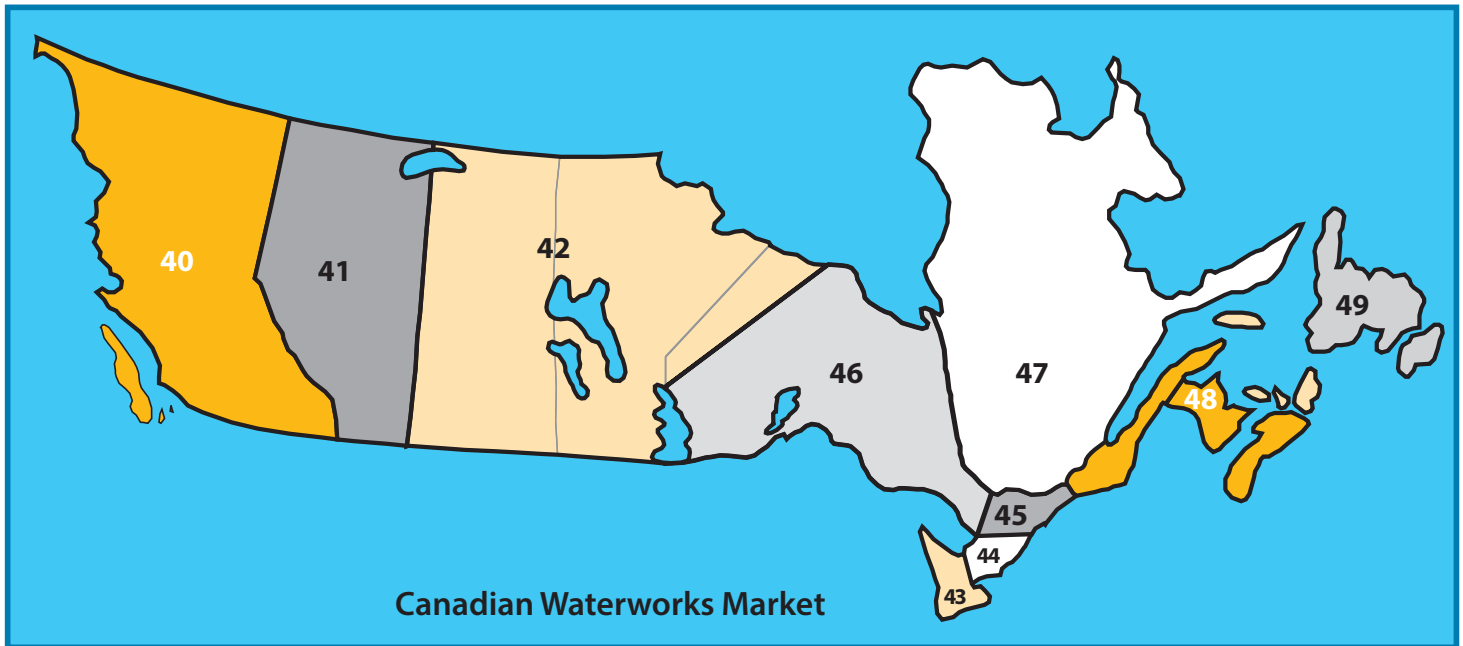
**48. NerohTek Sales**

Windsor, N.S.  
(902) 869-0103

**49. Par Four Plumbing**

St. Johns, N.F.  
(709) 739-7177

# WaterWorks Market Sales Map



Resources

# Plumbing Market Sales Reps

**1. David Gooding, Inc.**

Brockton, MA  
(508) 894-2000  
ME, NH, VT, MA, RI, CT

**2. Empire State Assoc.**

Ballston Spa, NY  
(518) 602-0271  
NY

**3. Altherm, Inc.**

Englewood, NJ  
(201) 871-0500  
New York City, Long Island,  
Northern New Jersey

**4. Rich-Tomkins Company, Inc.**

Aston, PA  
(610) 859-3552  
E. PA, Southern NJ, DE

**5. Fehr & Howard Sales Inc.**

Greensburg, PA  
(724) 838-9394  
West PA, WV

**6. Lowder Sales**

Lewis Center, OH  
(800) 221-5650  
OH

**7. Lozuaway & Assoc.**

Grand Blanc, MI  
(810) 234-1635  
MI

**8. Ashworth—Train Assoc.**

Indianapolis, IN  
(317) 722-1950  
IN

**9. Kast Marketing, Inc.**

Bensonville, IL  
(630) 227-0600  
N. IL

**10. McCullough & Assoc.**

Edina, MN  
(952) 946-0126  
MN, WI, ND, SD, Upper MI

**11. Mankin & Assoc.**

Earlham, IA  
(515) 758-2956  
IA, NE

**12. Mack McClain & Assoc.**

Olathe, KS  
(913) 339-6677  
KS, W. MO

**13. T.M. Sales**

Denver, CO  
(303) 375-1515  
CO, MT, WY

**14. McGregor & Assoc.**

West Jordan, UT  
(801) 566-8225  
UT, ID

**15. Gordon & Assoc.**

Vancouver, WA  
(360) 566-1470  
WA, OR, AK

**16. RD/Kincaide & Assoc.**

Benicia, CA  
(707) 745-3655  
N. CA, N. NV

**17. Carrhill Company**

City of Commerce, CA  
(323) 724-6087  
S. CA, Clark County, NV, HI

**18. BC Sales**

Goodyear, AZ  
(623) 810-2334  
AZ

**19. Stan Roberts & Assoc., Inc.**

Houston, TX  
(713) 224-9845  
South TX  
Dallas, TX  
(214) 637-2816  
North TX

**20. PSA**

Little Rock, AR  
(501) 312-8700  
AR

**21. OK! Sales**

Broken Arrow, OK  
(405) 794-5200  
Tulsa, OK

**22. Mack McClain**

St. Louis, MO  
(314) 894-8188  
S. IL, E. MO

**23. Billingsley BWC**

Kenner, LA  
(504) 602-8100  
LA, MS

**24. Wm. M. McClain Co, Inc.**

Nashville, TN  
(615) 226-9601  
TN

**25. Banks & Head Agency**

Anniston, AL  
(256) 235-9000  
AL, Panhandle FL

**26. United Sales Agency**

Marietta, GA  
(770) 514-7444  
GA

**27. Carr Company**

Boca Raton, FL  
(561) 997-0999  
FL, except Panhandle

**28. Pro Marketing**

Spartanburg, SC  
(864) 578-4334  
NC, SC

**29. Barger & Assoc.**

Yorktown, MD  
(888) 697-3755  
VA, D.C., MD

**30. Pinnacle Marketing**

Albuquerque, NM  
(502) 345-2700  
NM

**31. Kemper Sales & Assoc.**

Nicholasville, KY  
(859) 881-8624  
KY

## PUERTO RICO

**33. Inter American Builders Agencies**

Carolina, PR  
(787) 752-0200  
Puerto Rico

## MEXICO

**34. Ardent Sales**

Long Beach, CA  
(562) 552-4169  
Mexico

## CANADA

**40. Barclay Sales LTD.**

Port Coquitlam, BC  
(604) 945-1010

**41. Spectrum Sales Agencies 1982 LTD.**

Calgary, Alberta  
(403) 255-8332

Edmonton, Alberta  
(780) 486-2525

**42. Jones Goodridge**

Winnipeg, Manitoba  
(204) 632-6221

Regina, Sask  
(306) 530-9056

Saskatoon, Sask  
(306) 933-4377

**43. Showerline Sales LTD.**

London, Ontario  
(519) 657-2694

Waterloo, Ontario  
(519) 885-1578

**44. Armco Agencies LTD.**

Mississauga, Ontario  
(905) 238-8448

**45. Ventes Bergeron Sales**

Russell, Ontario  
(613) 445-4170

**46. Northern Mechanical Sales**

Garson, Ontario  
(705) 693-2715

**47. Agencies J. Pierre Sylvain, Inc.**

Boucherville, Que.  
(450) 655-9588

Quebec, PQ  
(418) 570-0703

**48. NerohTek Sales**

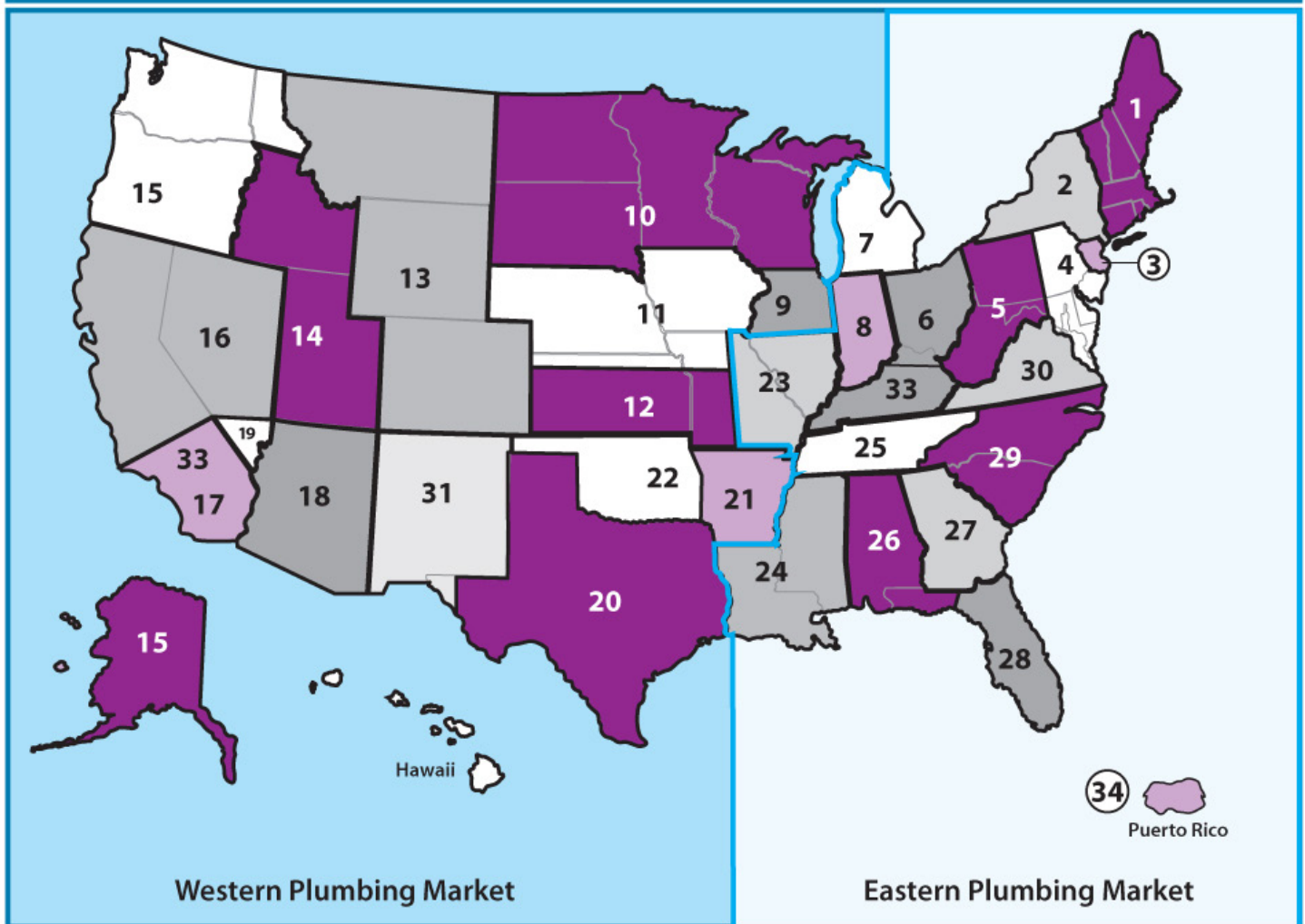
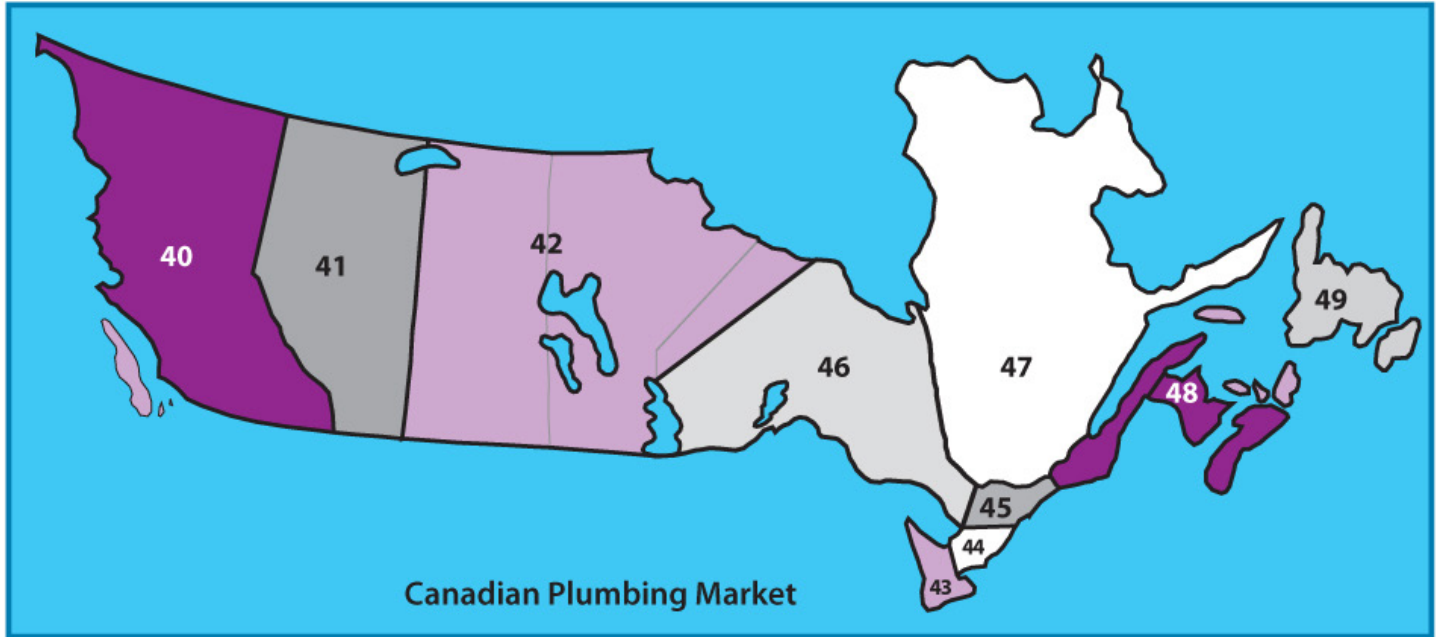
Windsor, N.S.  
(902) 869-0103

**49. Par Four Plumbing**

St. Johns, N.F.  
(709) 739-7177



# Plumbing Market Sales Reps



Resources

nc.

# Acid Resistance Chart

Maximum test pressure: 4.3 PSI  
Maximum operating temperature: 140° F non-consistent

R - Recommended N - Not Recommended

Reagent	Flexible Coupling 70°F	Proflex 70°F	Reagent	Flexible Coupling 70°F	Proflex 70°F	Reagent	Flexible Coupling 70°F	Proflex 70°F
Acetic Acid 20%	R	R	Disodium Phosphate	N	N	Silver Cyanide	R	R
Acetic Acid 80%	N	N	Distilled Water	R	R	Silver Nitrate	R	R
Acetone	N	N	Ethers	N	N	Silver Sulfate	R	R
Alcohol (Methyl or Ethyl)	R	R	Ethyl Acetate	N	N	Sodium Bicarbonate	R	R
Aluminum Chloride	R	R	Ethylene Chloride	N	N	Sodium Bisulfite	R	R
Aluminum Sulfate	R	R	Ethylene Glycol	R	R	Sodium Carbonate	R	R
Alums	R	R	Fatty Acids (C6)	R	R	Sodium Cyanide	R	R
Ammonia Gas (Dry)	R	R	Ferric Chloride	R	R	Sodium Ferrocyanide	R	R
Ammonium Chloride	R	R	Ferric Sulfate	R	R	Sodium Hydroxide	R	R
Ammonium Hydroxide	R	R	Fluorine (Gas Wet)	N	N	Sodium Hypochlorite	R	N
Ammonium Nitrate	R	R	Formaldehyde (20%)	R	R	Sodium Sulfate	R	R
Ammonium Phosphate	R	R	Formic Acid (10%)	R	R	Sodium Sulfide	R	R
Ammonium Sulfate	R	R	Freon 12 Dry	N	R	Sodium Sulfite	R	R
Ammonium Sulfide	R	R	Fruit Juices & Pulp	R	R	Sodium Thiosulfate	R	N
Amyl Chloride	N	N	Furfural	N	N	Stannic Chloride	R	N
Aniline	N	N	Gasoline (Refined)	N	N	Stannous Chloride	R	R
Aqua Regia	N	N	Glucose	R	R	Stearic Acid	R	R
Barium Chloride	R	R	Glycerine	R	R	Sulfite Liquor Sulfur	R	R
Barium Hydroxide	R	R	Hydrobromic Acid (20%)	R	N	Sulfur Dioxide (Dry) \	R	N
Barium Sulfate	R	R	Hydrochloric Acid	R	N	Sulfur Dioxide (Wet)	R	N
Barium Sulfide	R	R	Hydrocyanic Acid	R	R	Sulfuric Acid 50%	R	R
Beer	R	R	Hydroquinone	R	N	Sulfuric Acid 70%	N	N
Beet Sugar Liquors	R	R	Hypochlorous Acid	R	N	Sulfuric Acid 93%	N	N
Benzene	N	N	Iodine	N	N	Sulfurous Acid	R	N
Benzoic Acid	R	N	Kerosene	N	N	Tannic Acid	R	R
Black Liquor	R	R	Lactic Acid 25%	R	R	Tanning Liquors	R	R
Bleach 12.5% active Cl2	R	N	Linseed Oil	R	R	Tartaric Acid	R	R
Boric Acid	R	R	Liquors	N	N	Toluene	N	N
Bromic Acid	R	N	Machine Oil	N	N	Trichloroethylene	N	N
Bromine Water	N	N	Magnesium Chloride	R	R	Triethanolamine	N	N
Butane	N	R	Magnesium Sulfate	R	R	Trisodium Phosphate	R	R
Butyric Acid	N	N	Maleic Acid	N	N	Turpentine	N	N
Calcium Carbonate	R	R	Methyl Chloride	N	N	Urea	R	R
Calcium Chloride	R	R	Methyl Ethyl Ketone	N	N	Urine	R	R
Calcium Hydroxide	R	R	Milk	R	R	Vinagar	R	R
Calcium Hypochlorite	R	N	Mineral Oils	N	R	Water (Fresh)	R	R
Calcium Sulfate	R	R	Muriatic Acid	R	N	Water (Salt)	R	R
Cane Sugar Liquors	R	R	Nickel Chloride	R	R	Whiskey	R	R
Carbon Bisulfide	N	N	Nickel Sulfate	R	R	Wines	R	R
Carbon Dioxide	R	R	Nitric Acid 0-40%	R	N	Xylene	N	N
Carbon Monoxide	R	R	Nitric Acid 41-100%	N	N	Zinc Chloride	R	R
Carbon Tetrachloride	N	N	Oleic Acid	N	N	Zinc Sulfate	R	R
Carbon Acid	R	R	Oelum	N	N			
Caustic Soda	R	N	Oxalic Acid	R	R			
Caustic Soda 50%	R	R	Palmitic Acid 10%	R	R			
Caustic Potash	R	R	Perchloric Acid	N	N			
Chloride (Dry)	N	N	Petroleum Oils (Sour)	N	N			
Chloride (Wet)	N	N	Phenol 5%	N	N			
Chloroacetic Acid	N	N	Phosphorous Trichloride	N	N			
Chlorobenzene	N	N	Photographic Solutions	R	R			
Chloroform	N	N	Picric Acid	N	N			
Chromic Acid 10%	R	N	Plating Solution	R	R			
Chromic Acid 50%	N	N	Potassium Carbonate	R	R			
Citric Acid	R	R	Potassium Chlorate	R	R			
Copper Chloride	R	R	Potassium Chloride	R	R			
Copper Cyanide	R	R	Potassium Cyanide	R	R			
Copper Nitrate	R	R	Potassium Dichromate	R	R			
Copper Sulfate	R	R	Potassium Hydroxide	R	R			
Cottonseed Oil	R	R	Potassium Permanganate 10%	R	R			
Cresol	N	N	Potassium Sulfate	R	R			
Cyclohexanol	N	R	Propane Gas	R	R			
Cyclohexanone	N	N	Propyl Alcohol	R	R			
Dimethylamine	N	N	Sea Water	R	R			
Diethyl Pthalate	N	N	Sewage	R	R			

Resources

**NOTE:** The data listed in this table is only to give information in regard to general use and does not constitute a guarantee. Materials should be tested under actual service to determine suitability for a particular purpose.

**Fernco, Inc.**  
300 S. Dayton St.  
Davison, MI 48423  
fernco.com  
P: (810) 503-9000  
F: (810) 503-1015

**Fernco West**  
855 Linda Way  
Sparks, NV 89431  
fernco.com  
P: (810) 503-9000  
F: (810) 503-1015

## TERMS

*All prices shown are Trade/List, stated in U.S. currency and subject to change without notice*

**MINIMUM INVOICE** - None

**PAYMENT TERMS** - 1% 10th prox. NET 30 days unless otherwise stated. Shortage claims must be made to Fernco within 15 days after delivery

**FREIGHT TERMS** - Prepaid and allowed on net order of \$750.00 or more unless otherwise stated. All others will be prepaid and billed. Claims for loss or damage must be filed with the freight carrier

**SALES POLICY** - Fernco products are available to any legitimate wholesaler, pipe manufacturer or distributor with approved credit

**RETURN POLICY** - All returns must be preceded by factory authorization. Minimum 15% restocking charge will apply to all standard Fernco products. All materials returned to Fernco should be in original cartons and be in resalable condition. This amount is subject to change depending on condition of items returned to Fernco

- Fernco Custom Parts are Non-Refundable
- Freight must be prepaid on all return shipments
- Returns will not be allowed after 90 days of invoice date

## LIMITED WARRANTY

Fernco warrants its product(s) against defects in workmanship or materials for one (1) year from date of original purchase (unless a shorter period is expressly provided with respect to a particular product). Fernco's total liability under any warranty, or any other claim arising in any way from the product or its use, is limited, at Fernco's option, to refund or replacement of any such product returned to Fernco within the one-year warranty period and determined by Fernco to be defective. To the extent permitted by law, Fernco disclaims and excludes any and all other warranties, express or implied, including without limitation any implied warranty of merchantability or fitness for a particular purpose, and in no event shall Fernco be liable for special, incidental or consequential damages. Failure to follow the installation instructions provided by Fernco will void this warranty. To make a warranty claim, purchaser should have the original receipt and contact Fernco, Inc. Customer Service Department, 810 503-9000. Purchaser is responsible for any shipping charges.

If state law preserves implied warranties, including implied warranties of merchantability and fitness for a particular purpose, such warranties are limited to one-year from the date of the original purchase and as otherwise set forth above. Some states do not allow limitations on how long an implied warranty lasts, or the exclusion of incidental or consequential damages, so such limitation(s) or exclusion(s) may not apply to you.

This written warranty gives you specific legal rights, and you may also have other rights which vary from state to state.







*PROVEN. PREFERRED. PROFESSIONAL.*