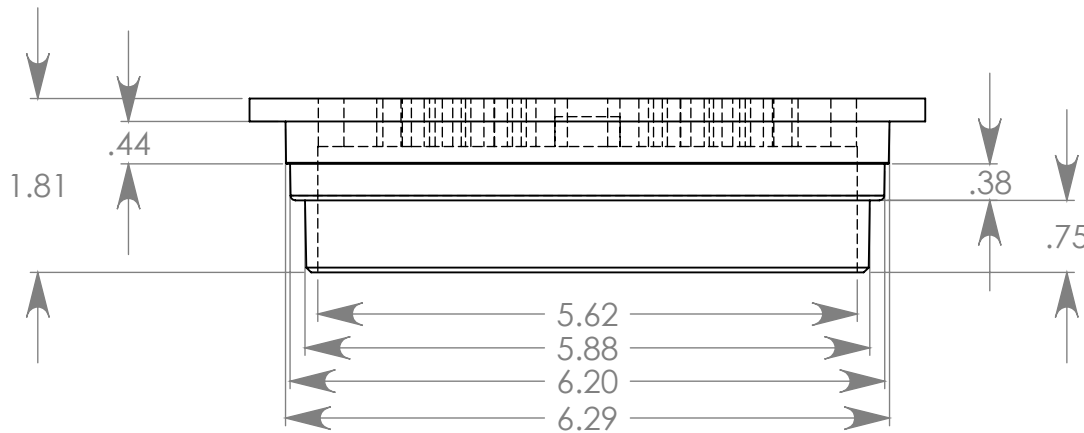


Material: Polyethylene
 Open Area: 8.2 sq. in.
 Flow Rate: 10.7 GPM
 ADA: Yes
 Wt. Class: B
 Heel: Yes
 Color: Green



Use with Catch Basins; (FSD-060-CB, FSD-060-CB-1, FSD-060-CB-2)
 Bottom Outlet Connects to; 6" (S&D Pipe, S&D Hub, Corrugated, Sch 40)

FSD-060-R

Rnd Grt Bottom Outlet

01 Oct 09

