



**PICOTE BRUSH COATING™**  
**PUMP IT UP**

# OWN IT

Affordable, simple solution designed  
to take your business to another level

[www.picotebrushcoating.com](http://www.picotebrushcoating.com)

**PICOTE**  
LIFE FOR PIPES

# POTENTIAL

The Picote Brush Coating™ System is suitable for renovating entire piping systems for example apartments or blocks of flats, from the rooftop to the city sewer. However that is only the beginning, our system can expand your business with fresh opportunities.

## HYBRID

CIPP Mainlines/stacks and coat laterals

## PROTECTION

Coating barrier to prevent rust & corrosion

## GAPPING

Fill gaps between CIPP Liners

## REINFORCE

Strengthen CIPP lined connections

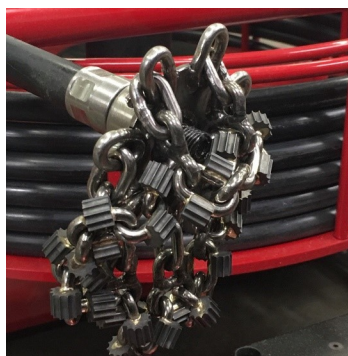






## HIGH SPEED CLEANING

Prepare pipes with the Mini or Maxi Miller  
before you begin coating



Our Picote Millers provide very efficient high-speed cleaning with a variety of tools for cast iron, clay, concrete and PVC pipes 1 ¼" to 12" including a wide range of grinding chains. Simply select the tool you need and connect it to the machine shaft to clean even problem pipes fast. When you have completed the cleaning process you can fix the Coating Pump to your Miller to begin the coating method.



# Picote 100% Solids Epoxy

## *dual color*

The Picote 100% Solids Epoxy is specially formulated to work in harmony with the Picote Brush Coating™ System. ASTM and NSF/61 certified. The easy lock and load cartridges work with the Picote Smart Mixer to offer a simple, mess-free solution. Improve quality control with the unique dual color system. Depending on the pipe choose either white or gray for the first coat and then the other colour for the second coat, alternating depending on the number of coats. This makes it simple to visually verify any spots that have been missed.



Meets the Requirements of  
NSF/ANSI 61-5







# PICOTE SMART MIXER

Keep it simple

The battery powered Picote Smart Mixer automatically combines the dual component epoxy. Lock the Smart Mixer in place by fitting it to the bracket on the Miller and load the Picote 100% Solids Epoxy cartridge to begin work. Simply dispense into the Coating Pump Cup for an easy, mess-free solution.





## PUMPED UP

Featuring a no-mess peristaltic pump which combines the resin and hardener together to ensure evenly mixed resin enters the delivery hose.



## TAKE CONTROL

Our Coating Pumps feature a digital control box. A rotational dial allows the user to control the speed of delivery, which is dependent on the pipe diameter. The pump should always be set to forward (FWD), the Miller should also always be set to rotate clockwise.





Pump up to 75ft with the Mini Coating Pump.

Suitable for lined or unlined pipes from 1¼" to 8".



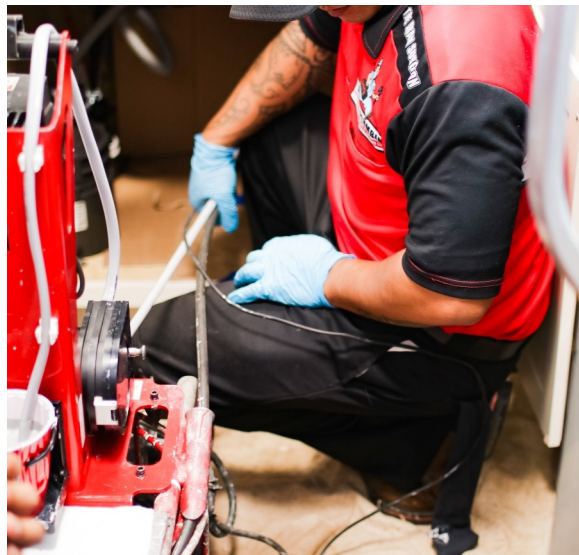
### FLEXIBLE SOLUTION

The shaft and brushes are very flexible, making it easy to navigate multiple bends even in very small pipes (from 1¼"). If there are several bends or if the line set is difficult to push through the pipe, a special lubricant can be used to reduce friction.

SUITABLE FOR USE ON VERTICAL AND HORIZONTAL PIPELINES

### IN A TIGHT SPOT?

The Mini Miller Brush Coating™ System is designed for almost any environment, including very tight work spaces, making this a great solution for apartment buildings.



The chemical resistance of our Picote 100% Solids Epoxy makes this a great method for rehabilitating swimming pool lines.

LIGHTWEIGHT AND PORTABLE SYSTEM

# Mini Coating Parts List

Ask your reseller for a current list with prices

## Resellers

[picotebrushcoating.com](http://picotebrushcoating.com)

## Assembly

[youtube.com/picotesolutions](https://youtube.com/picotesolutions)

## Demo

[youtube.com/picotesolutions](https://youtube.com/picotesolutions)



MINI MILLER 110V



MINI MILLER COATING PUMP 110V



SMART MIXER



PICOTE 100% SOLIDS DUAL-COLOR EPOXY





COATING BRUSHES  
1¼", 2", 3", 4", 6", 8"



SUPPLY HOSE



DELIVERY HOSE



CONNECTOR & HOSE  
CLAMPS



BRUSH STOPPER



CARTRIDGE TIPS &  
NUTS

## Resellers

---

[picotebrushcoating.com](http://picotebrushcoating.com)

## Assembly

---

[youtube.com/picotesolutions](https://youtube.com/picotesolutions)

## Demo

---

[youtube.com/picotesolutions](https://youtube.com/picotesolutions)

# "Expand Your Business"

1. RESIDENTIAL & HIGHRISE

2. NUCLEAR, OIL & GAS, HYDRO-ELECTRIC

3. MUNICIPAL & INDUSTRIAL

4. POOLS & DAMS







## TRAIN with Picote

Picote offers a range of training options at our Training Centers in Anderson, SC, and also in Porvoo, Finland.



## Hands-on approach

An opportunity to get to grips with the Picote Brush Coating™ System and learn more about how it can help expand your business.





# NEW

## MAXI MILLER PUMP

Go further than ever before with the new Maxi Coating Pump for the Maxi Miller. 3" to 12" pipes.



[picotebrushcoating.com](http://picotebrushcoating.com)

Pump up to 135ft with the Maxi Coating Pump.

Suitable for lined or unlined pipes from 3" to 12".



## PUMP IT TO THE MAX

Speed and distance: Coat a larger or longer surface area much faster. Coat longer runs inside larger diameter pipes. Wider profile brushes provide a smoother application and a thicker coat of material. New resin cup design: cone-shaped cup design keeps new material moving to the hose easier.

SIMPLE & AFFORDABLE REQUIRING NO COMPLICATED PROGRAMMING

## ADDED BENEFITS

No environmental hazards; no recirculating and cleaning hoses. Lightweight and portable. Adapts to your Maxi Miller. Develop new business opportunities for your existing Maxi Miller with minimal additional investment.



Easy to clean with disposable hoses and hose connectors.

FOR CONCRETE, PVC, FIBREGLASS, CLAY, CAST IRON & DUCTILE PIPES



# Maxi Coating Parts List

Ask your reseller for a current list with prices

## Resellers

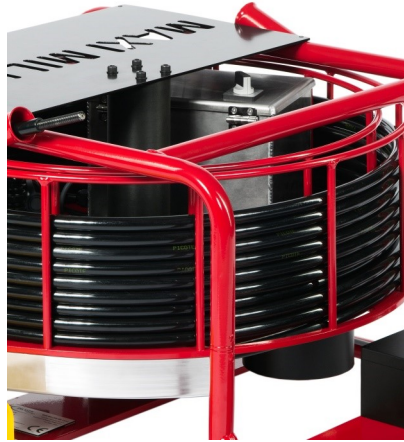
[picotebrushcoating.com](http://picotebrushcoating.com)

## Assembly

[youtube.com/picotesolutions](https://youtube.com/picotesolutions)

## Demo

[youtube.com/picotesolutions](https://youtube.com/picotesolutions)



MAXI MILLER 110V



MAXI MILLER COATING PUMP 110V



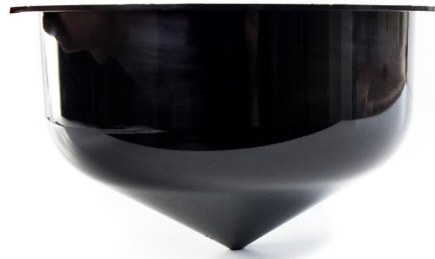
SMART MIXER



PICOTE 100% SOLIDS DUAL-COLOR EPOXY



COATING BRUSHES  
3", 4", 6", 8", 10", 12"



RESIN CUP X10



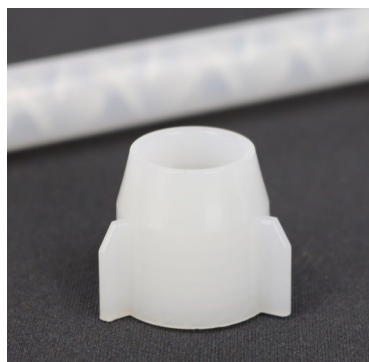
DELIVERY HOSE



SUPPLY HOSE &  
CONNECTORS X10



BRUSH STOPPER



CARTRIDGE TIPS &  
NUTS

## Resellers

---

[picotebrushcoating.com](http://picotebrushcoating.com)

## Assembly

---

[youtube.com/picotesolutions](https://youtube.com/picotesolutions)

## Demo

---

[youtube.com/picotesolutions](https://youtube.com/picotesolutions)



## CONTACT US

CONTACT YOUR RESELLER/SALESPERSON/PICOTE

INFORMATION & SUPPORT:

Email: [support@picotesolutions.com](mailto:support@picotesolutions.com)

TECHNICAL SUPPORT

USA - Jake Saltzman: [jake@picotesolutions.com](mailto:jake@picotesolutions.com) / +1 706 436 1892

ROW - Richard Swan: [richard@picotesolutions.com](mailto:richard@picotesolutions.com) / +44 (0)7827 223237  
[support@picotesolutions.com](mailto:support@picotesolutions.com)



FOLLOW US

