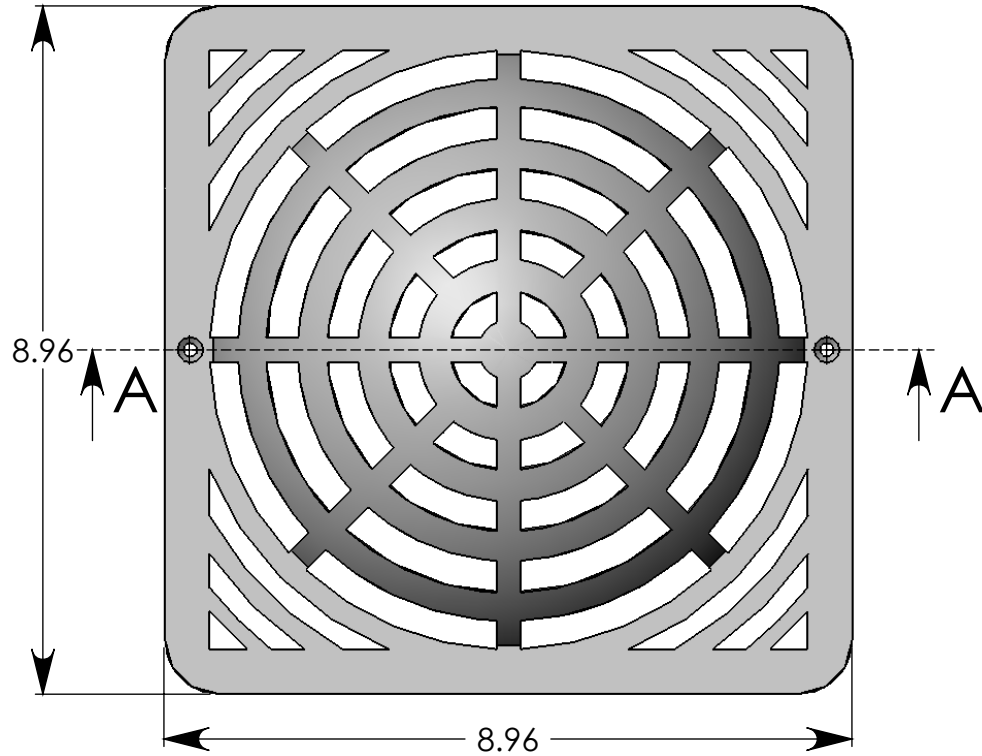
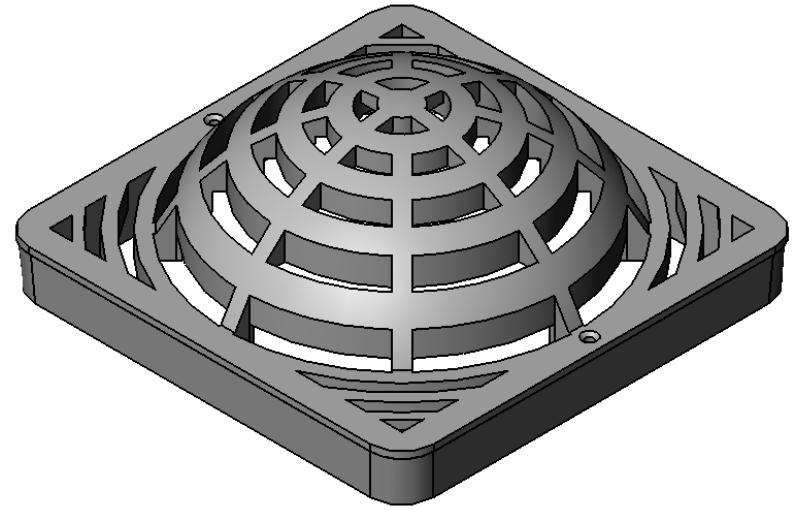


SECTION A-A



Use with FSD-090-CB-2 (9" Catch Basin)

Material:	Polyethylene
Open Area:	30 sq. in.
Flow Rate:	39.7 GPM
ADA:	No
Wt. Class:	No
Heel:	No
Color:	Green



FSD-090-A

Atrium Grate

01 Oct 09

