



IMPROVED DRAINAGE

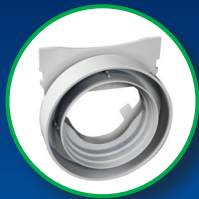
The durability & high performance of the newly designed Fernco StormDrain *Plus* ensures a long lasting, permanent solution for the removal of standing surface water.

Designed for a stronger and easier drainage solution

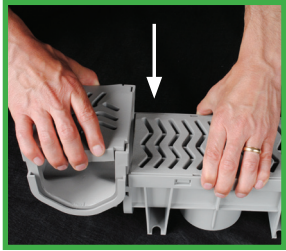
- Withstands automotive vehicle weight
- All products are "UV" inhibited
- Grates are ADA and heel guard compliant
- 3 bottom outlets in every channel
- No clips or screws required to assemble



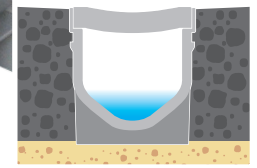
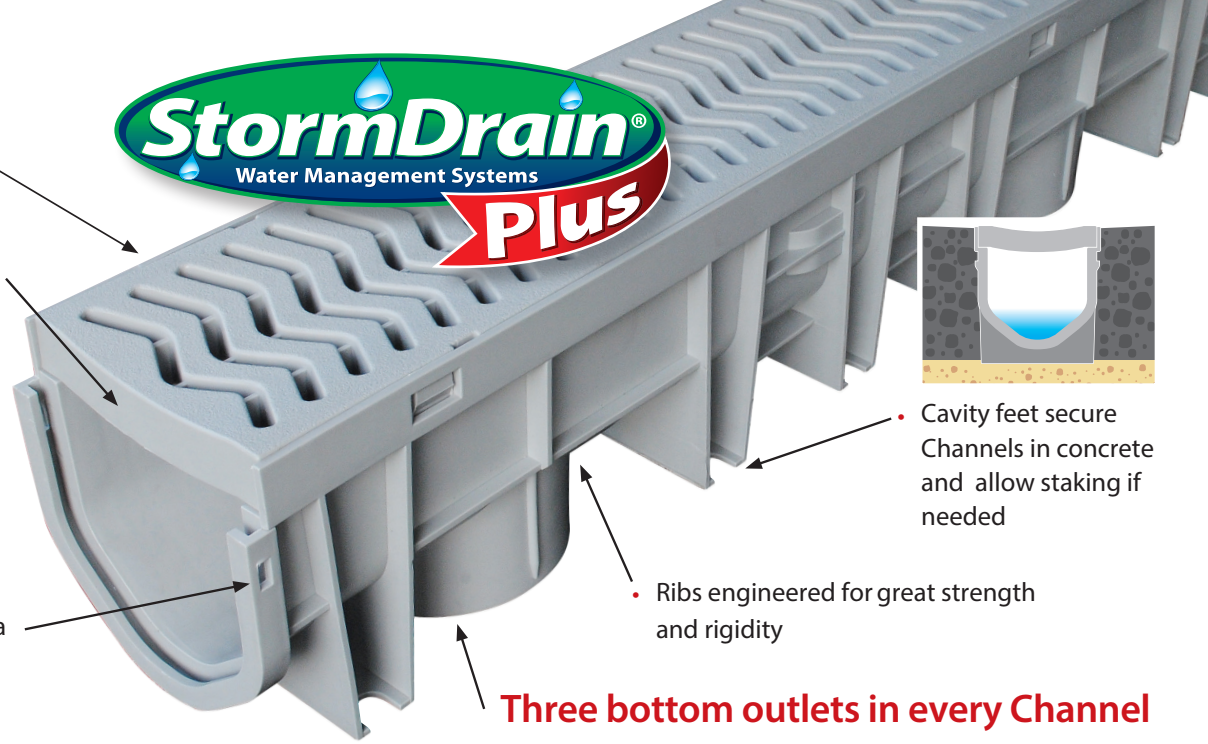
Driveways • Patios • Swimming Pools •
Sports Courts • Gardens • Walkways



- Grates lock-in the channel
- Textured, non-slip surface
- Concave shape efficiently traps and transfers water



- Channel lengths interlock with a secure built-in joining system



- Cavity feet secure Channels in concrete and allow staking if needed

- Ribs engineered for great strength and rigidity

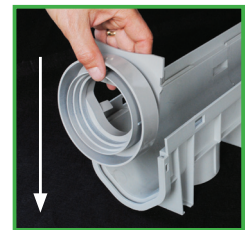
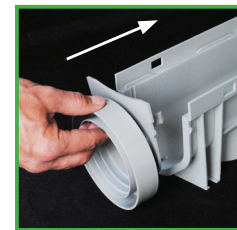
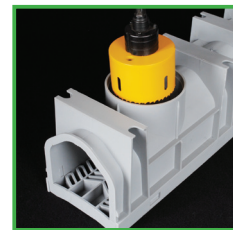
Three bottom outlets in every Channel

- The bottom outlets can be cut out with a hole saw or utility knife to accommodate 3" and 4" Sch. 40 pipe, 4" SDR-35 pipe, 3" corrugated and 4" triple wall.

Quad - FSDP-QUAD



The Quad allows left or right hand extension of the StormDrain Plus or T and X configurations. The required openings are easily cut out.



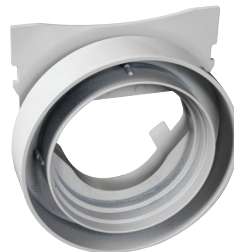
Simple accessory attachment

- The StormDrain Plus Quad, End Cap and End Outlet slide into the female end of the Channel and have tabs to fit into the male end or the cut to length end of the Channel.

End Cap - FSDP-EC



End Outlet - FSDP-EO



39.5" Channel
FSDP-CHGG



Contractor Pack
FSDP-GP3G

Part No.	Descriptions	Carton QTY
FSDP-CHGG	39.5" StormDrain Plus grey Channel with grate	9
FSDP-GP3G	StormDrain Plus Contractor Pack: 3 pieces of grey Channel with grate, 1 End Cap & 1 End Outlet	3
FSDP-QUAD	StormDrain Plus Quad - 4-way connector	3
FSDP-EC	StormDrain Plus End Cap	5
FSDP-EO	StormDrain Plus End Outlet	10

* **CLASS B:** Loads of 61-175 psi. Recommended for medium-duty pneumatic tire traffic, autos and light trucks at speeds less than 20 mph.