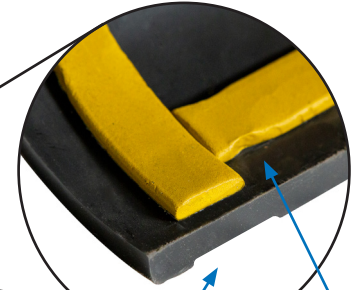


TSPK-46 Tap Saddle Pressure Kit

ONE SIZE. For use with Fernco Flexible Tap Saddle models: TST-4, TST-6, TSW-4, TSW-6

Installation Instructions



1. Cut the first two strips of the bentonite sealing tape. Remove the protective paper. Apply the tape to the underside of the saddle keeping it centered under the band areas. **SEE DETAIL.**

2. Cut the second two strips of bentonite sealing tape. Remove the protective paper and apply the tape to the underside of the saddle, 1/2" from each edge. Butt up to the first two strips. **DO NOT overlap.**

DETAIL

Tape centered under band area.

Tape 1/2" from the edge of the saddle. **Butt the strips, do not overlap.**



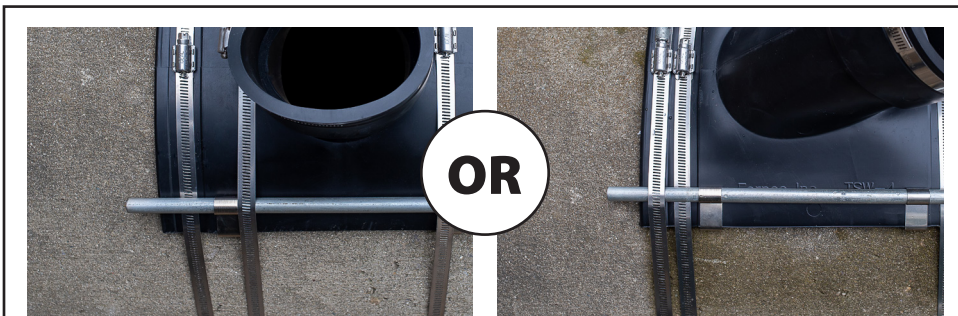
3. Install the Fernco flexible tap saddle. Tighten clamps to 60 inch-lbs. torque.



4. Attach the reinforcing bars to the saddle by sliding the clips under the saddle.

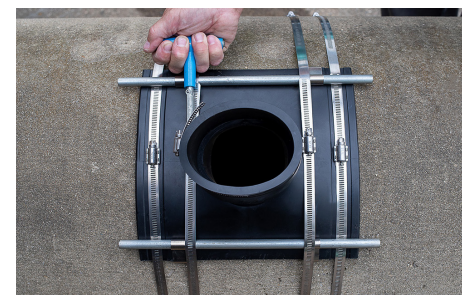


5. Bars must be centered and positioned overlapping the initial set of clamps.



6. Install the 2 clamps provided with the TSPK-46 around the host pipe near the saddle inlet, **INSIDE** the tap saddle bands.

NOTE: For TSW-4 ONLY
Due to space restrictions, install the 2 clamps provided around the host pipe **OUTSIDE** the tap saddle bands.



7. Tighten clamps to 60 inch-lbs. torque. Test for leaks prior to backfilling.



United States
PH: 810-503-9000
FX: 810-503-1015

www.fernco.com

Canada
PH: 519-332-6711
FX: 519-332-8610